

The SSIS product family is on Review360!



The SSIS™ is a comprehensive, evidence-based system that assesses key CASEL-identified competencies and related social skills to support students' social wellness health. It is administered individually or to a group of students digitally through Review360® in a matter of minutes.

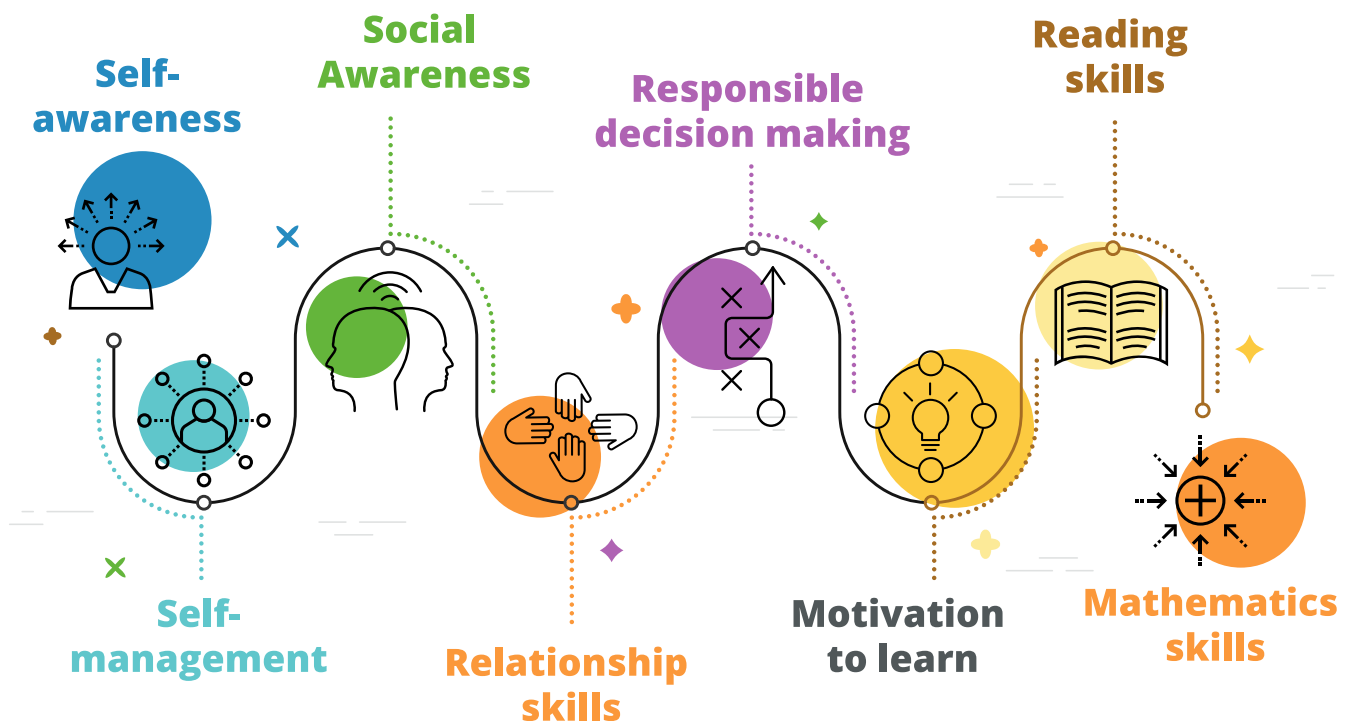
Our two Universal Screening units are offered in English and Spanish. Additionally, it can be used to guide the application of its evidence-based interventions within a multi-tiered framework.



SSIS is 100% aligned to the key CASEL-identified competencies framework.

DID YOU KNOW?

With SSIS you can assess and teach:



SSIS Solution: Integrated System & Aligned Process

- Screening and Assessment can guide Intervention
- Progress Monitoring and Diagnostic Assessment can be used to evaluate performance on each social skill and related competency, and it can also assess overall student outcomes

Universal Screeners	Progress Monitor	Diagnostic Assessment	Intervention
SSIS Brief Scales and/or Brief Scales + <i>Mental Health</i> <ul style="list-style-type: none"> • Student • Teacher • Parent 	SSIS Screening & Progress Monitoring Scales <ul style="list-style-type: none"> • Teacher 	SSIS Rating Forms <ul style="list-style-type: none"> • Student • Teacher • Parent 	<ul style="list-style-type: none"> • SSIS SEH Classwide Intervention Program (SSIS SEH CIP) • SSIS SEH Classwide Intervention Program Tier 2 (SSIS SEH CIP-T2)

Fully Aligned Assessments that Measure the Same Skills Taught in the Intervention Program

The five components to SSIS on Review360

1. **SSIS Brief + Mental Health Scales:** Brief, universal screeners that can be completed by a teacher, parent, or student for social skills and/or mental health.
2. **SSIS Screening & Progress Monitoring Scale:** A criterion-referenced teacher-completed form that provides a quick evaluation of an entire class across the five social skill areas. The results are directly aligned with the Skill Units from the Classwide Intervention Program that includes a criterion-referenced assessment of three academic areas, providing guidance that targets interventions to the specific needs of a classroom of students.
3. **SSIS Rating Forms:** More in-depth norm-referenced assessments administered individually and completed by teachers, parents, or students. Results include standard scores, item analysis, and links to suggested Skill Units in the intervention.
4. **SSIS SEH Classwide Intervention Program 2022 (SSIS SEH CIP):** The SSIS SEH CIP 2022 includes 30 Skill Units covering Self-Awareness, Self-Management, Social Awareness, Relationship Skills, and Responsible Decision Making using a highly effective instructional approach with all digital materials (PowerPoints, videos, etc.) to maximize engagement.
5. **SSIS SEH CIP-T2:** The SSIS SEH CIP-T2 is a tier 2 intervention program that builds upon the SSIS SEH CIP for improving social wellness of students who need extra support beyond what is received in the tier 1 program.
6. **Review360 Professional Development Course:** Review360 includes an online course that assists educators in integrating social skill assessment and instruction into their instructional and support processes. The course is comprised of 13 units that cover a range of relevant topics, including the importance of social skills, how it improves student-teacher and student-student relationships, and strategies for promoting social wellness.

We offer a variety of subscription options for the SSIS family of products on Review360.

Component	Description	Subscription Options		
		Review360 SSIS Universal Screening & Intervention License	Review360 SSIS Diagnostic and Intervention License	Review360 SSIS Complete Integrated License
ISBN Number:		A103000278805	A103000227549	A103000278806
SSIS Brief + Mental Health Scales ¹	Teacher Form Student Form Parent Form 4–5 minutes per student per form for the Brief Scales Brief + Scales Mental Health Scales 5–7 minutes per student per form	✓		✓
SSIS Screening and Progress Monitoring Form ²	Teacher Form 3 minutes per student when completing all rubrics		✓	✓
SSIS Rating Forms	Teacher Form, Student Form, Parent Form, 10–25 minutes per student per form		✓	✓
SSIS SEH Classwide Intervention Program (SSIS SEH CIP)	Tier 1 intervention program	✓	✓	✓
SSIS SEH CIP-T2	Tier 2 intervention program	✓	✓	✓
Review360 Professional Development Course	On-demand professional development course		✓	✓
Select this package if:		High Priority: <ul style="list-style-type: none"> • Multi-informant universal screening • Mental health screening • Intervention Low Priority: <ul style="list-style-type: none"> • Frequent progress monitoring • Professional development 	High Priority: <ul style="list-style-type: none"> • Universal screening • Progress monitoring • Intervention • Professional development Low Priority: <ul style="list-style-type: none"> • Multi-informant universal screening • Mental health screening 	High Priority: <ul style="list-style-type: none"> • Multi-informant universal screening • Mental health screening • Progress monitoring • Intervention • Professional development

¹ May be used for universal screening

² May be used for universal screening and/or progress monitoring

To order, contact your Pearson Assessment Consultant or call Customer Support at **800-328-5999; option 1.**