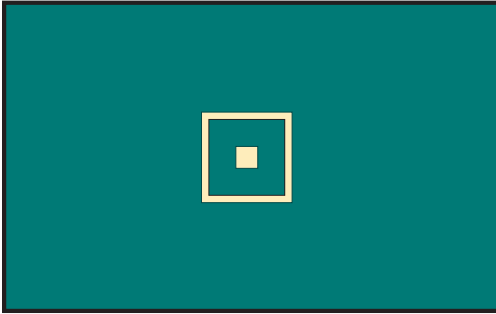


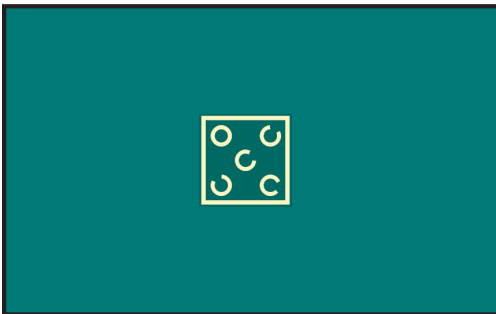
Screening Modules

Alertness



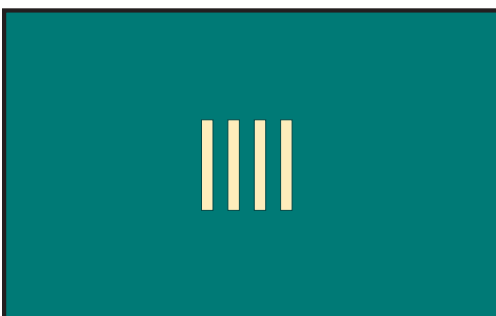
Measurement of Tonic Alertness (without warning sound, A) and Phasic Alertness (with warning sound, B) in an ABBA setup, 80 stimuli in total.

Divided Attention



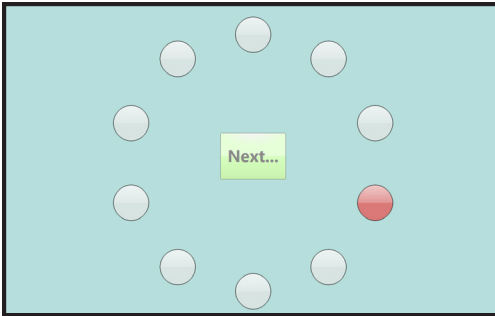
Divided visual and auditory attention, stimuli presented simultaneously. One trial contains 80 visual stimuli, with 15% relevant stimuli, as well as 160 auditory stimuli, with 10% relevant stimuli.

Selective Attention



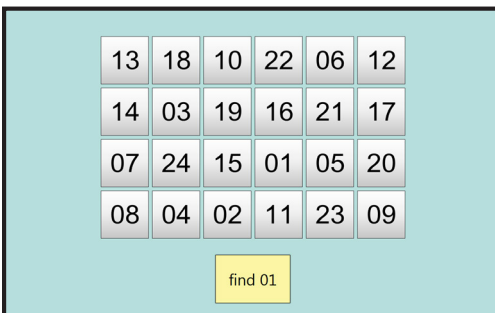
Examines the ability to react in an appropriate way under timed pressure and simultaneously control behavioral impulses.

Working Memory



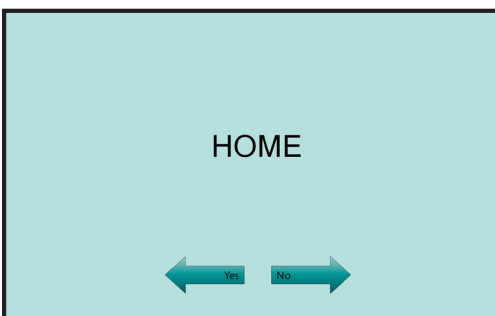
Measures visual-spatial memory span. It also tests the implicit visual-memory learning and working memory.

Spatial Numbers Search



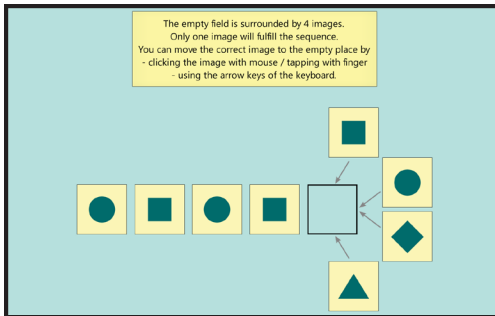
Measures basal cognitive performance, selective attention, and visual scanning. The test can also be used for screening a visual neglect.

Memory for Words



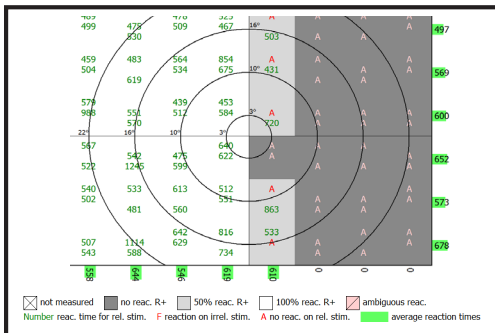
This screening module is used to investigate verbal learning ability according to the paradigm of recurring figures. The patient has to read and store real words which are difficult to visualize.

Logical Reasoning



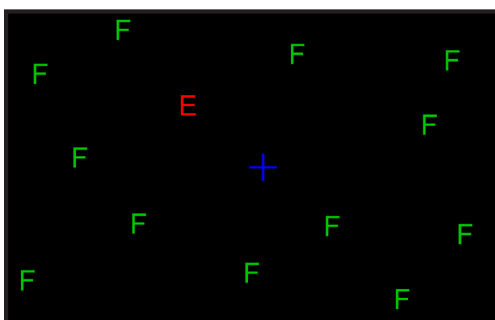
Measures the ability to identify regularities, to continue a series, and to draw logical conclusions (figural convergent thinking). It examines the ability to complete logical sequences.

Visual Field



Measures the visual field, fixation accuracy, and sustained attention. Will map visual field deficits and neglect symptoms.

Visual Scanning



Measures the patient's performance in exploring his visual field. Two parameters are measured: parallel search ("at a glance") and serial search ("in a structured way").

For more information visit
[PearsonClinical.com/RehaCom](https://www.pearsonclinical.com/RehaCom)

888.783.6363 |  PsychCorp | [PearsonClinical.com](https://www.pearsonclinical.com)