



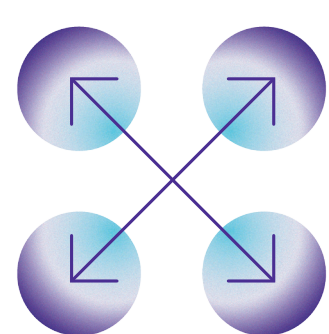
How To Support the Whole Child Through Assessments

When you think of assessments, your mind probably goes to assessing a student's academic knowledge. Such assessment is crucial. But assessment systems are most effective when they allow you to take the whole child into consideration and to personalize your support for each student.

Here's how Pearson Assessments empowers you to do just that.

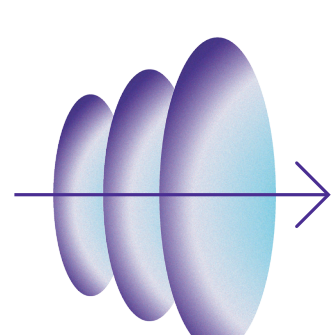
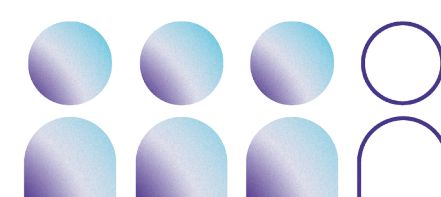
The Power of the Pearson Assessment for Learning Suite: Accelerate Learning by Supporting the Whole Child

The Pearson Assessment for Learning Suite offers a comprehensive portfolio of K–12 assessments. This suite of tools:



Provides a holistic view of each student as well as data intended to inform laser-focused personalized instruction

Offers not only assessments of learning but also assessments *for* learning, informing how best to teach each student, communicate with their family and more



Works at the district, classroom and individual levels — allowing school leaders and educators to choose the assessment products that best meet their needs



How You Can Use the Pearson Assessment for Learning Suite



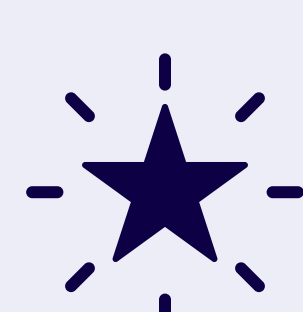
Need academic screeners and progress monitoring?

aimswebPlus™ screens and monitors reading and math skills for pre-K–12 students. Uncover learning gaps, identify at-risk students and assess individual and classroom growth.



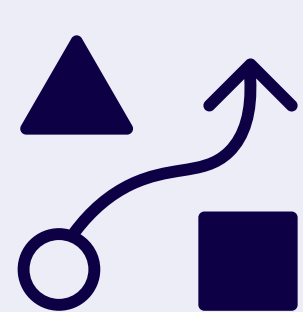
Need to screen for behavior?

Review360 allows you to conduct a deep analysis of classroom behavior, staff responses and consequences. Identify effective interventions, and enhance communication with families on student progress.



Need to identify gifted/talented students?

NNAT®3 (Naglieri Nonverbal Ability Test®, Third Edition) helps identify K–12 students with the potential for advanced scholastic achievement. This nonverbal assessment of general ability is ideal for the needs of all learners.



Need to personalize instruction?

Navy, a standard-by-standard classroom assessment system, provides real-time, actionable and accurate results to inform personalized instruction. Navy shows you where each student needs additional instruction and how best to support them.



Need to measure student performance?

The interim assessment **PRoPL** gives you evidence-based results about student performance across ELA and math — well before you get to summative assessments. Configurable to any set of state standards, PRoPL measures student achievement and highlights areas that need more instruction.

[Learn more today](#)

Thank you for all that you do!

“Thank you” can’t quite convey the immense gratitude we have for your dedication day in and day out to nurturing and inspiring your students. For each child that steps into your classroom, educators like you, ignite the spark in their unique learning journey. As students begin to chart a path toward college and/or a career, you are a guiding presence and champion, encouraging them to explore and pursue what interests and drives them. Mentor. Role model. Advocate. Teacher. We’re here to support you in the many ways that you support students.