

“By the Numbers”

The MMPI-3 provides an empirically validated, psychometrically up-to-date dimensional approach to assessment of personality and psychopathology.

335

items

72

new items

24

updated items



25–35

minutes to administer
(by computer)



*English-
language norms*

810 men
810 women

*Spanish-
language norms*

275 men
275 women

Scales

5

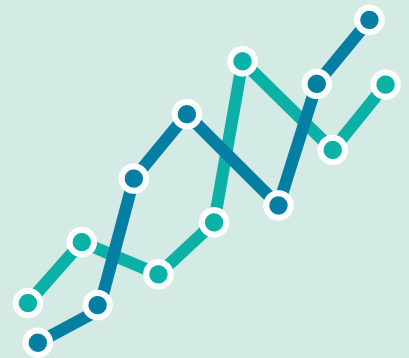
new scales

Combined Response Inconsistency
Eating Concerns
Compulsivity
Impulsivity
Self-Importance

52

total scales

10 Validity Scales
3 Higher-Order (H-O) Scales
8 Restructured Clinical (RC) Scales
26 Specific Problems (SP) Scales
5 Personality Psychopathology
Five (PSY-5) Scales



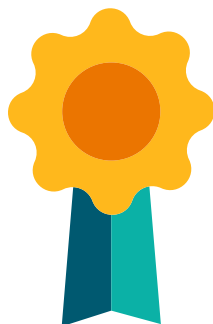
Validity & Reliability

37,968

validity coefficients
across a variety of
settings*

38,850

comparisons of MMPI-2-RF/
MMPI-3 correlates**



*Reliability estimates and standard errors
of measurement provided for*

1,600

participants in
the normative
sample

275

individuals in
the normative
test-retest sample

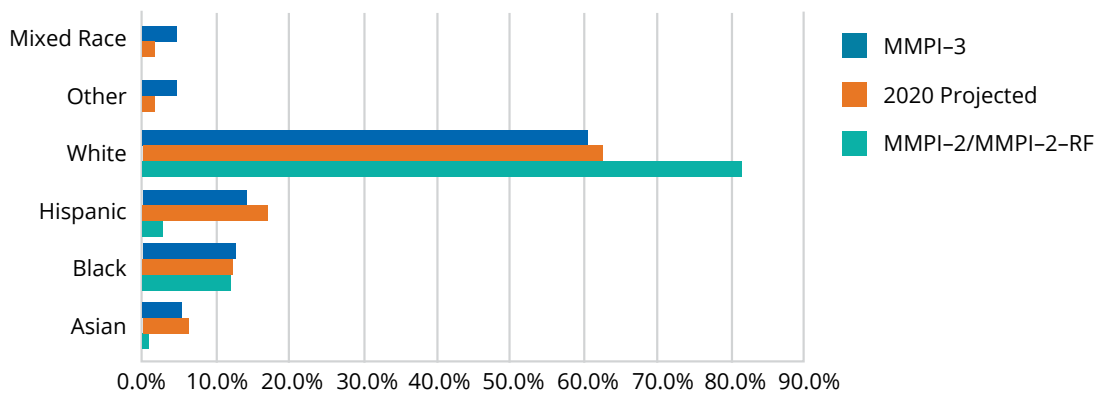
791

clients in an
outpatient mental
health sample

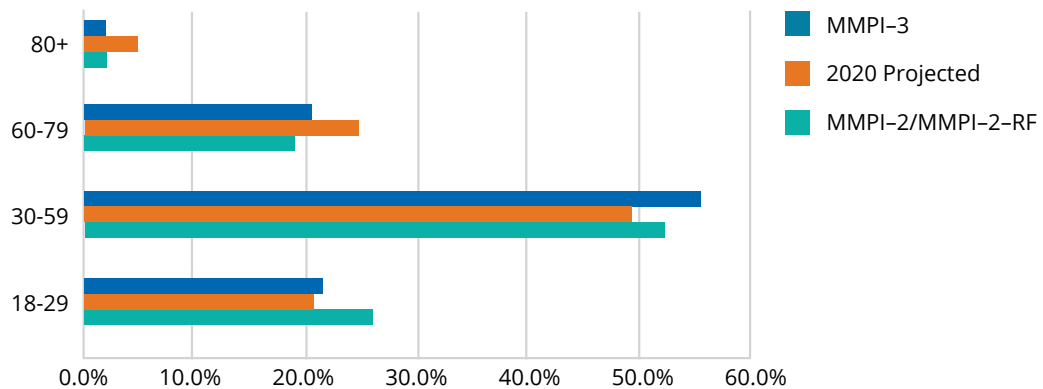
*MMPI-3 Technical Manual, Appendix D

**MMPI-3 Technical Manual, Appendix E

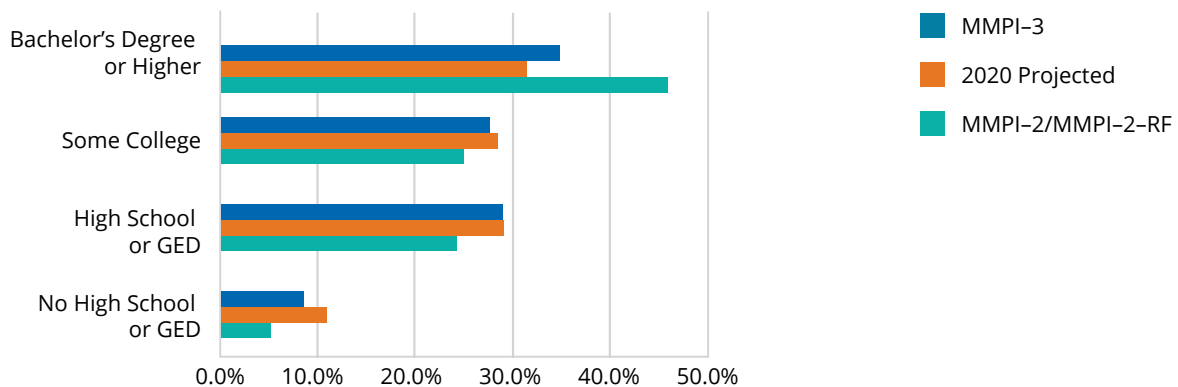
Ethnic Origins of Participants in the MMPI-3 Normative Sample Compared to 2020 Projected Census Data and MMPI-2/MMPI-2-RF Normative Sample



Age Distribution of Participants in the MMPI-3 Normative Sample Compared to 2020 Projected Census Data and MMPI-2/MMPI-2-RF Normative Sample



Education of Participants in the MMPI-3 Normative Sample Compared to 2020 Projected Census Data and MMPI-2/MMPI-2-RF Normative Sample



For training, sample reports, comparison groups, and more visit PearsonAssessments.com/MMPI-3.