



# Reading Assessment *Calendar*

While the Developmental Reading Assessment® (DRA™) is arguably one of the most popular benchmarking tools for determining reading skills, its usefulness extends throughout the entire year. From initial benchmarking to consistent progress monitoring and end-of-year skills checks, DRA™3 has you covered from bell to bell!

# August

*Get ready for back to school to kick the school year off right!*



## Back-to-school prep

- Conduct staff training
- Set up teacher access to the DRA3 online platform
- Attend training or review of DRA3
- Perform implementation checks
- Prepare your class lists for Fall Benchmark Assessment
- Plan for pre-assessment activities

*September*



## Assessments and instruction

- Conduct DRA3 assessments
- Begin follow-up instruction
- Administer the DRA3 Word Analysis to students below benchmark

*October*



## **Interventions, instruction, and progress monitoring**

- Administer the Word Analysis to K-3 students below benchmark
- Progress Monitor students in grades 2–8
- Conduct Reading Engagement assessment
- Model, teach, and support areas in need of instruction
- Prepare for Parent-Teacher conferences

# November



- **National Family Literacy Day**
- **American Education Week**
- **Read for the Record**



## Time for parent-teacher conferences!

- Monitor progress of identified students
- Model, teach, and support areas in need of instruction
- Conduct parent-teacher conferences

# December



## Progress monitoring and continued instruction

- Monitor progress of identified students
- Model, teach, and support areas in need of instruction

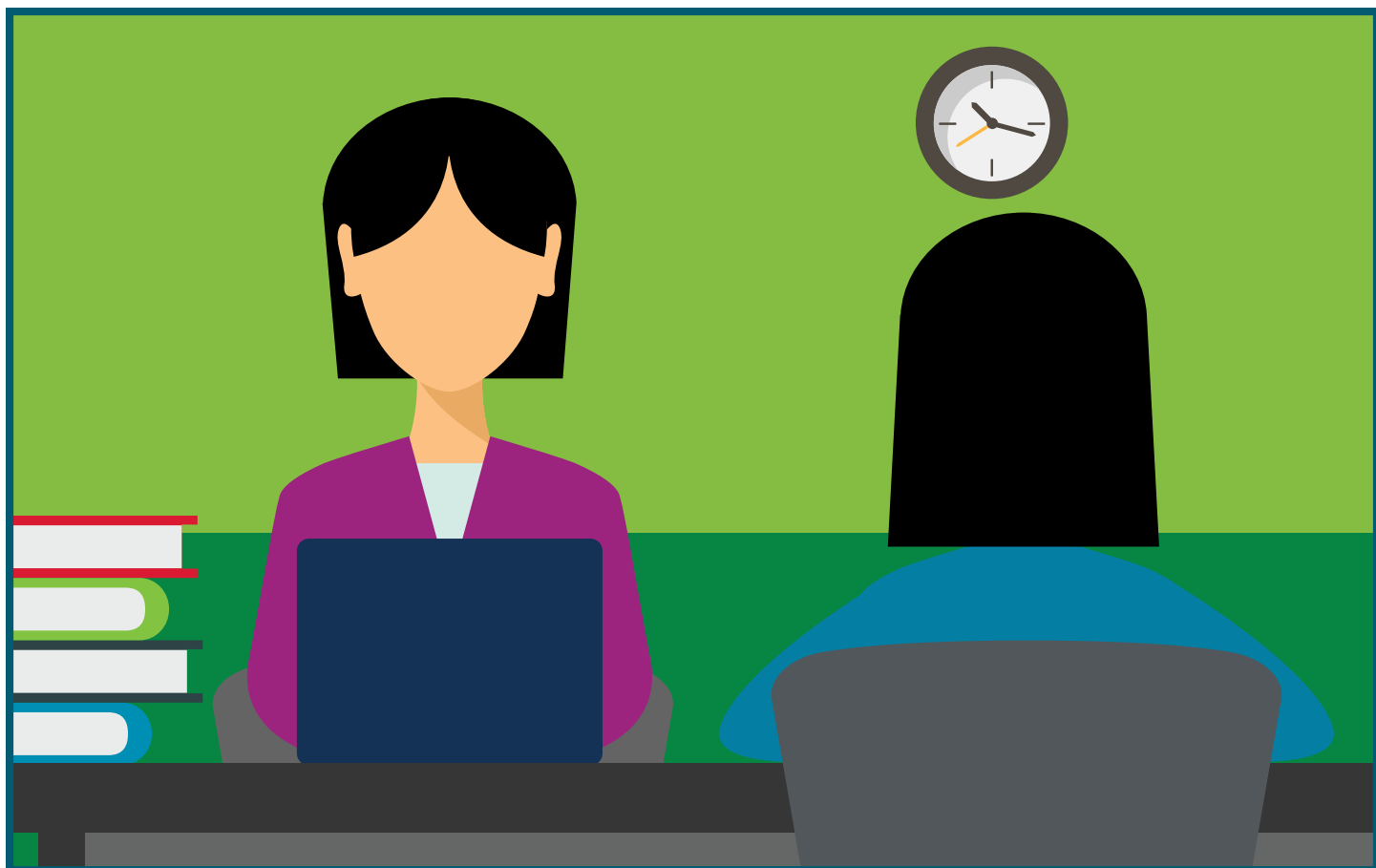
# January



## Mid-year progress monitoring

- Monitor progress of identified students
- Model, teach, and support areas in need of instruction
- Administer Word Analysis to emerging readers in kindergarten
- Readminister the Word Analysis
- Follow district assessment calendar for mid-year assessments
- Conduct follow-up instruction
- Model, teach, and support areas in need of instruction

# February



## Progress monitoring and mid-year conferences

- Monitor progress of identified students
- Administer Word Analysis to grades 1–3 students below benchmark
- Prepare for and conduct mid-year Parent-Teacher conferences
- Model, teach, and support areas in need of instruction



# March



## Progress monitoring and continued instruction

- Monitor progress of identified students
- Model, teach, and support areas in need of instruction

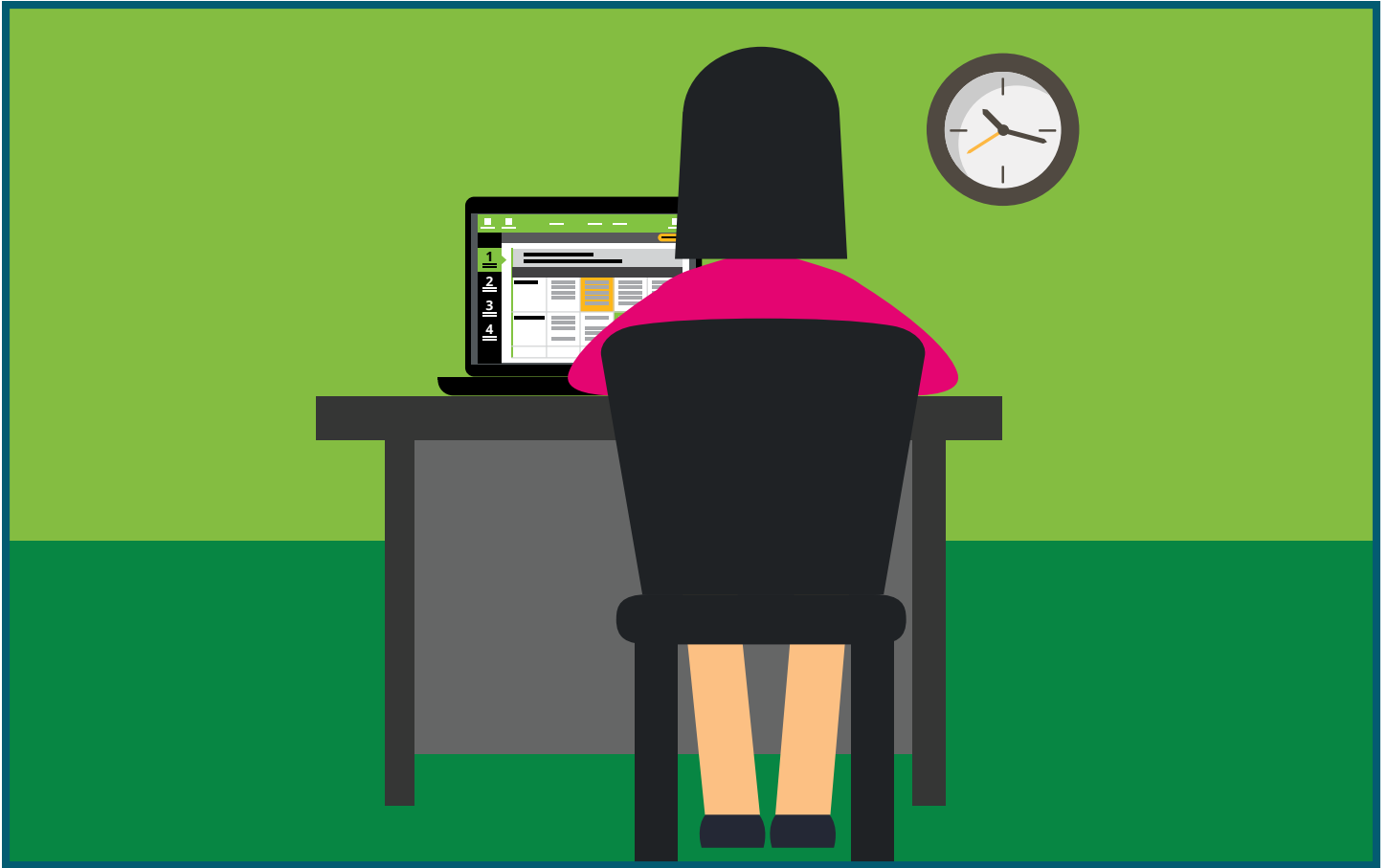
*April*



## **Progress monitoring and continued instruction**

- Monitor progress of identified students
- Model, teach, and support areas in need of instruction

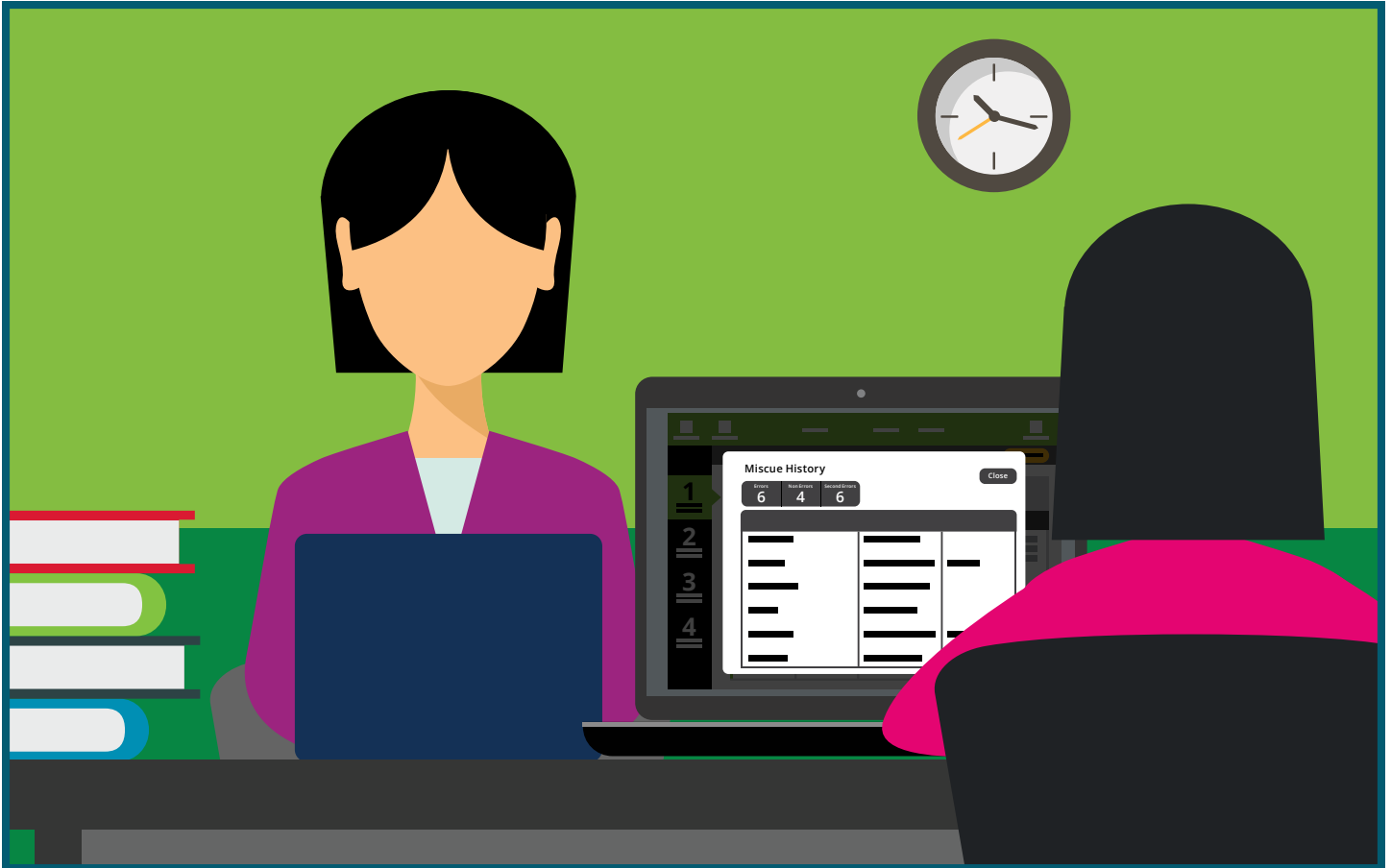
*May*



## Spring benchmarks and end-of-year prep

- Prepare materials for spring benchmark
- Conduct and score DRA3 end-of-year assessments
- Administer Word Analysis with students previously assessed mid-year
- Prepare suggested reading list and reading log

*June*



## Plan for next year

- Prep student files to transition for new school year
- Order additional kits
- Restock assessment forms

*July*



**Enjoy the summer!**

[PearsonAssessments.com/DRA3](https://www.pearsonassessments.com/DRA3)

800-328-5999 | [PearsonAssessments.com](https://www.pearsonassessments.com)

Copyright © 2019 Pearson Education. All rights reserved. Pearson and DRA are trademarks, in the US and/or other countries, of Pearson plc. LRNAS18293 SR 10/19