

The Pearson logo, featuring a stylized 'P' icon followed by the word 'Pearson' in a sans-serif font.

Pearson

aimswebPlus

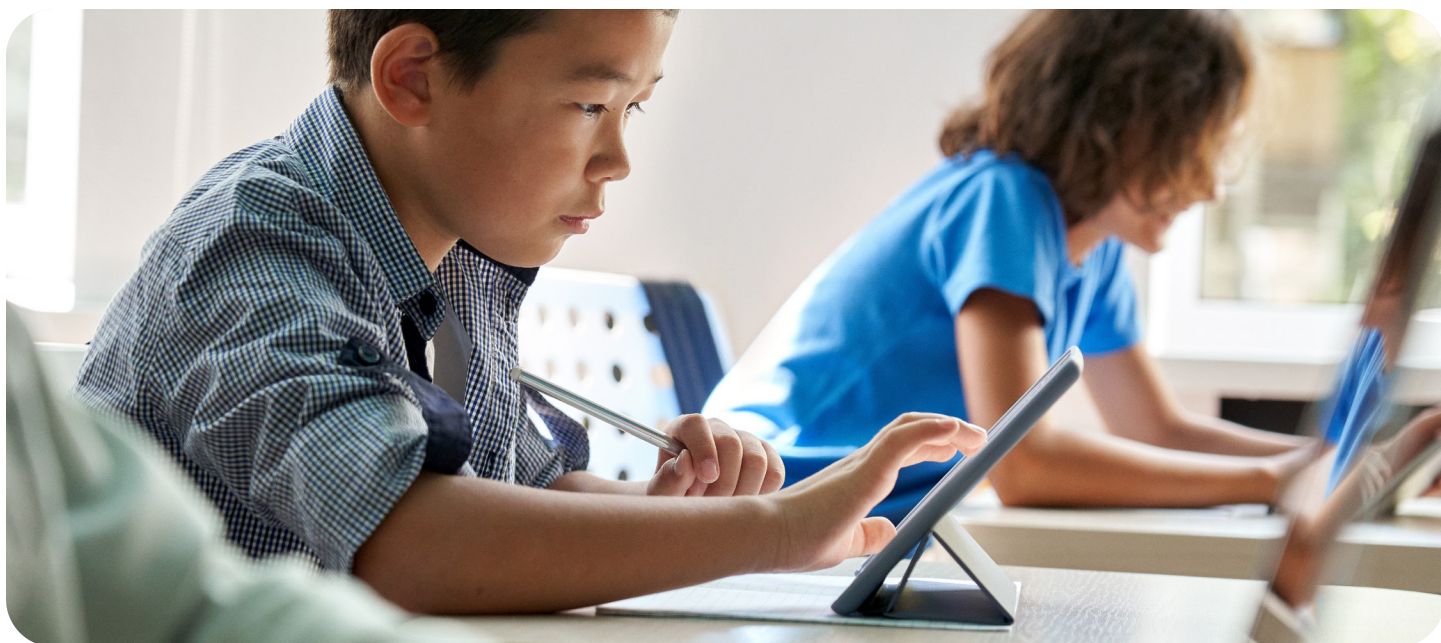
---

A photograph of two young students in a classroom. In the foreground, a boy with short dark hair, wearing a grey t-shirt with yellow and green stripes, is sitting at a wooden desk and raising his right hand. In the background, a girl with long dark hair in pigtails, wearing a blue dress, is also sitting at a desk and looking towards the camera. The classroom has large windows in the background, letting in bright light.

aimswebPlus

Essential reading and math assessments for  
successful early intervention





**aimswebPlus™ provides benchmarking and progress monitoring for Prek–12 foundational reading and math skills, as well as screeners for dyslexia and behavior.**

Using aimswebPlus, schools can now identify and group at-risk students early, monitor and report student progress, and predict performance on grade level expectations. aimswebPlus builds upon brief, valid, and reliable measures of foundational skills in reading and math by adding standards-based assessments useful for instructional planning. An intuitive user interface and immediate results help teachers to quickly target instruction and interventions and preserve classroom teaching time.

### **Use aimswebPlus to help you**

- Benchmark and monitor students in one seamless system
- Uncover learning gaps faster and more accurately
- Track student progress for more effective instruction and interventions
- Meet accountability requirements

### **Benefits of aimswebPlus**

- **Brief:** Most assessments take 1 to 4 minutes to complete.
- **Predictive:** Provides accurate predictions of reading and math achievement.
- **Sensitive:** Includes student Rate of Improvement (ROI) growth percentiles and summaries that allow schools to compare progress against similar students in a national sample.
- **Flexible:** Delivers strong benchmarking and progress monitoring robust enough to add a wide array of additional screeners and instructional supports.
- **Teacher-friendly:** Easy to administer and score by a wide range of education personnel.
- **Tested:** Content accurately measures reading and math skills with proven reliability, validity, and national norms.

aimswebPlus At-A-Glance

- Universal screening, progress monitoring, and results reporting in one seamless system
- National norms for accurate performance comparisons
- Reports with Lexile® and Quantile® scores

Key measures in **Early Literacy and Reading, Early Numeracy and Math, Spanish Early Literacy and Reading, Spanish Early Numeracy and Math,** aimsweb classic measures, and add-ons.

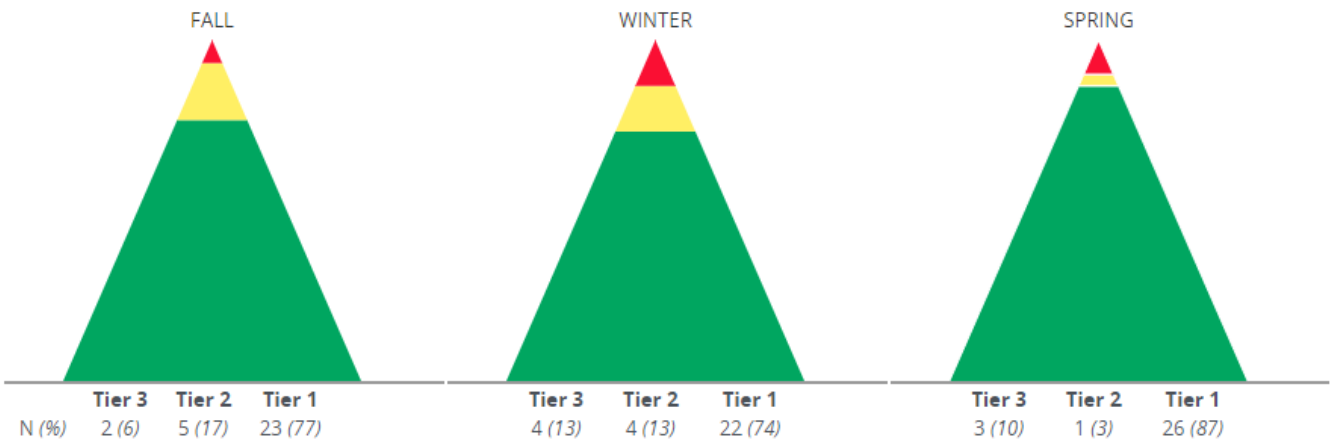
Reports included

- **Group reports:** Benchmark Distribution, Scores and Skills Plan, ROI Growth Norms, Tier Transition, Math Skills Analysis.
- **Individual reports:** Individual Benchmark, Individual Monitoring, Scores Snapshot, Skills Plan-Reading, Skills Plan - Math, Individual Skills Analysis.

Tier Transition Report

Tier: 1 Low Risk 2 Moderate Risk 3 High Risk

Tier Transition Summary



Transition Details

Fall to Winter Transition					Winter to Spring Transition					Fall to Spring Transition				
Fall		Winter Tier for Fall Students			Winter		Spring Tier for Winter Students			Fall		Spring Tier for Fall Students		
Tier	N (%)	<div></div>	<div></div>	<div></div>	Tier	N (%)	<div></div>	<div></div>	<div></div>	Tier	N (%)	<div></div>	<div></div>	<div></div>
<div></div>	2 (7)	1	1		<div></div>	4 (14)	3	1		<div></div>	2 (7)	1		1
<div></div>	5 (17)	2	1	2	<div></div>	4 (13)			4	<div></div>	5 (17)	2		3
<div></div>	23 (76)	1	2	20	<div></div>	22 (73)			22	<div></div>	23 (76)		1	22
	30	4	4	22		30	3	1	26		30	3	1	26

## Additional screeners for a whole-child view

These days, time is a commodity that feels almost tangible. In order to learn where your students are regarding their literacy, mental wellness, academics, and social skills, having everything you need to achieve a whole-child view right at your fingertips is not just convenient — it's a necessity!

Make data-driven decisions by addressing the whole child through the lens of your tiered systems of support for literacy, academics, mental and social wellness. Adding these additional screeners to your aimswebPlus subscription will not only support the goals of your school/district, but it will also help you support the students whose unique strengths and needs are waiting to be discovered.

### Literacy

- **Shaywitz DyslexiaScreen™** Identify students at risk for dyslexia and comply with screening mandates.
- **Dyslexia Probability Calculator™** Quantify the severity of dyslexia risk (free with Shaywitz DyslexiaScreen add-on).
- **Rapid Automatized Naming (RAN)** Quickly measure rapid automatic naming for students in K-3.
- **WriteToLearn™** Further develop reading comprehension, expand vocabulary, build writing skills, and save time with automatic scoring!
- **Pattern Inventory & Analysis Tool (PIAT)** Spelling assessment and intervention/instruction plan that will help grow reading and writing.

### Behavior and social wellness

- **BASC™-3 BESS** Determine behavioral and emotional strengths and weaknesses of all students.
- **SSIS™** Provide screening, diagnostic assessment, and intervention with this comprehensive, evidence-based, CASEL aligned social wellness system.

### Learn more

[PearsonAssessments.com/aimswebPlus](https://PearsonAssessments.com/aimswebPlus)

### Contact your rep

866-313-6194

Opt. 1 to order aimswebPlus or add additional screeners to your aimswebPlus subscription