

INTRODUCING aimswebPlus + the SSIS system



aimsweb
PLUS™



Students with well-developed social skills spend more time on task and helping others, resulting in a decrease in negative behavior and significant increases in learning and academic achievement.

aimswebPlus + SSIS provides you with the tools to help.

aimswebPlus

market leading norm-based screening and progress monitoring for early literacy, reading, early numeracy, and math



SSIS

a comprehensive, evidenced-based, social wellness system



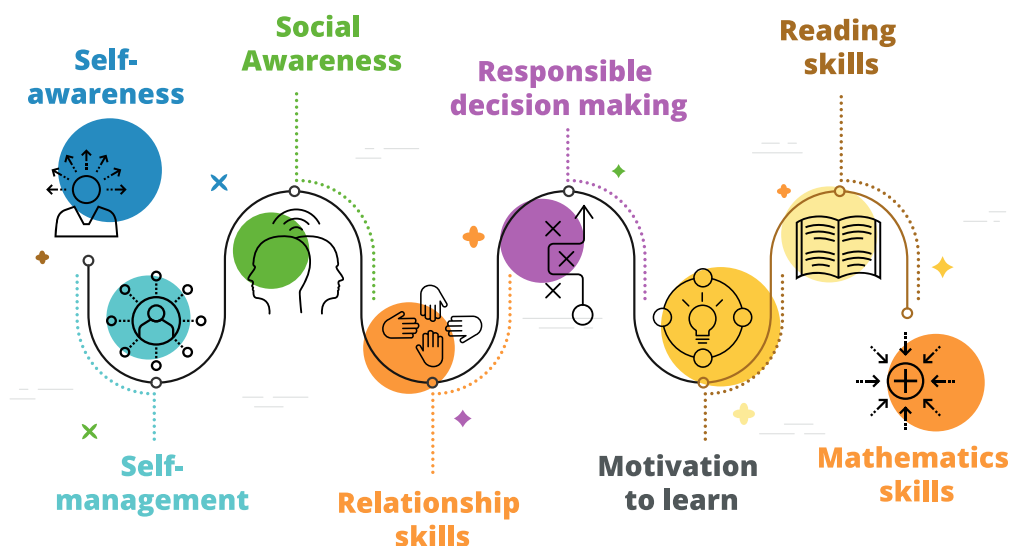
a powerful partnership for assessing and teaching skills within any MTSS framework

Early screening is key for student success

aimswebPlus™ was designed to universally screen and progress monitor using a combination of curriculum-based and untimed, standards-based measures for reading and math in grades preK-12. With aimswebPlus, schools can identify and group at-risk students, monitor and report student progress, and track student performance toward end-of-year targets.

SSIS™ (SSIS™) is a comprehensive, evidence-based, social wellness system that assesses the five CASEL-identified competencies and related social skills. The SSIS encompasses the full assessment cycle and is the only measure to also assess key academic skill areas.

SSIS will assess and teach:



SSIS is 100% aligned to the key CASEL-identified competencies framework.

Features & Benefits

Updated: The latest revision brings the SSIS in line with the CASEL framework and addresses core social skills.

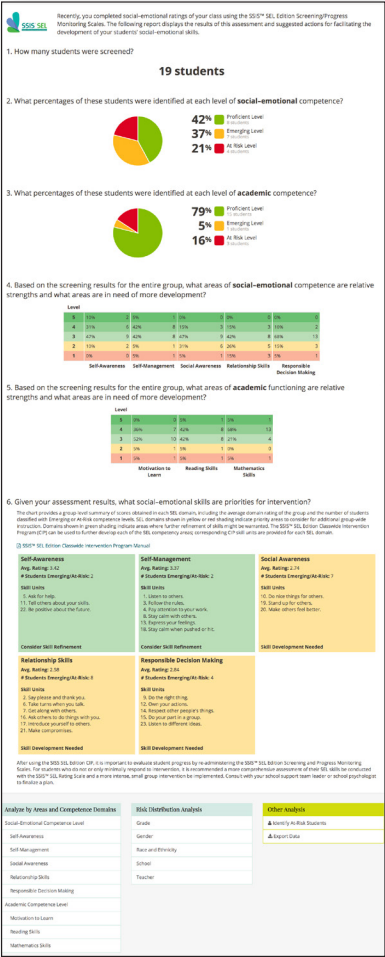
Comprehensive: The SSIS includes the full *screen, assess, intervene, and monitor* assessment cycle and is the only measure to also assess key academic skill areas.

Effective: The SSIS is a highly engaging and focused solution.

S.A.F.E.: The SSIS is a “Sequenced, Active, Focused, and Explicit” program for students, ages 4 to 14.

Table showing SSIS results for a class. Columns: Student, Social-Emotional Competence, Academic Competence, Reviewed? Rows include students like Jewet, Amy, Allen, Paul, Hemphill, Lenny, etc.

The **At-Risk Report** lists students in risk order. This will help determine where to start your analysis to ensure that students with the most need have their screener results reviewed quickly so intervention can begin.



Individual Student Report for Jewet, Amy (4927). The report shows detailed results for Social-Emotional and Academic Competence levels across various domains, including Self-Awareness, Self-Management, Social Awareness, Relationship Skills, Responsible Decision Making, Academic Competence, Motivation to Learn, Reading Skills, and Mathematics Skills. It also includes a table for classroom and disciplinary incidents.

The **Individual Student Report** displays the results for each competency screened as well as the composite and academic results.

- Components include:**
- Screening/Progress Monitoring Scales
 - Rating Form Assessment (teacher, parent, and student forms)
 - Classwide Intervention Program (CIP) and Classwide Intervention Program Tier 2
 - Overview professional development course

The **Group Report** is an aggregate report that helps determine resources based on the number and percentage of students at each classification level, the skills that need instruction, and includes a link to the Classwide Intervention Program manual. The data can be disaggregated by demographics, teacher, competency, etc.

SSIS Solution: Integrated System & Aligned Process

- Screening and Assessment can guide Intervention
- Progress Monitoring and Diagnostic Assessment can be used to evaluate performance on each social skill and related competency, and it can also assess overall student outcomes

Universal Screener and Progress Monitor	Diagnostic Assessment	Intervention
SSIS Screening/ Progress Monitoring Scales • Teacher	SSIS Rating Forms • Student • Teacher • Parent	• SSIS SEH Classwide Intervention Program (SSIS SEH CIP) • SSIS SEH Classwide Intervention Program Tier 2 (SSIS SEH CIP-T2)

Fully Aligned Assessments that Measure the Same Skills Taught in the Intervention Program

The SSIS components on aimswebPlus include:

1. SSIS Screening and Progress Monitoring Scale: A criterion-referenced teacher-completed form that provides a quick evaluation of an entire class across the social areas. It is used for universal screening and progress monitoring. The results are directly aligned with the Skill Units from the Classwide Intervention Programs that include a criterion-referenced assessment of three academic areas, providing guidance that targets interventions to the specific needs of a classroom of students.

2. Rating Forms: More in-depth norm-referenced assessments administered individually and completed by teachers, parents, or students. Results include standard scores, item analysis, and links to suggested Skill Units in the Intervention Guide.

3. SSIS SEH Classwide Intervention Program (CIP): The SSIS SEH CIP includes 30 Skill Units covering Self-Awareness, Self-Management, Social Awareness, Relationship Skills, and Responsible Decision Making using a highly effective instructional approach with all digital materials (PowerPoints, videos, etc.) to maximize engagement.

4. SSIS SEH Classwide Intervention Program Tier 2 (CIP-T2): is a Tier 2 intervention program building upon the SSIS SEH CIP for improving social wellness of students who need extra support beyond what they received in a Tier 1 program.

Experience aimswebPlus + SSIS [Contact your rep](#) or call 866-313-6194, Opt. 1 to order aimswebPlus or add SSIS to your aimswebPlus subscription.

Learn more at PearsonAssessments.com/aimswebPlus

866-313-6194 | PearsonAssessments.com