



Minnesota Multiphasic
Personality Inventory-2
Restructured Form™

Interpretive Report: Clinical Settings

MMPI-2-RF®

Minnesota Multiphasic Personality Inventory-2-Restructured Form™

Yossef S. Ben-Porath, PhD, & Auke Tellegen, PhD

ID Number: 13
Age: 35
Gender: Male
Marital Status: Never Married
Years of Education: 12
Date Assessed: 08/12/2008

PEARSON

PsychCorp

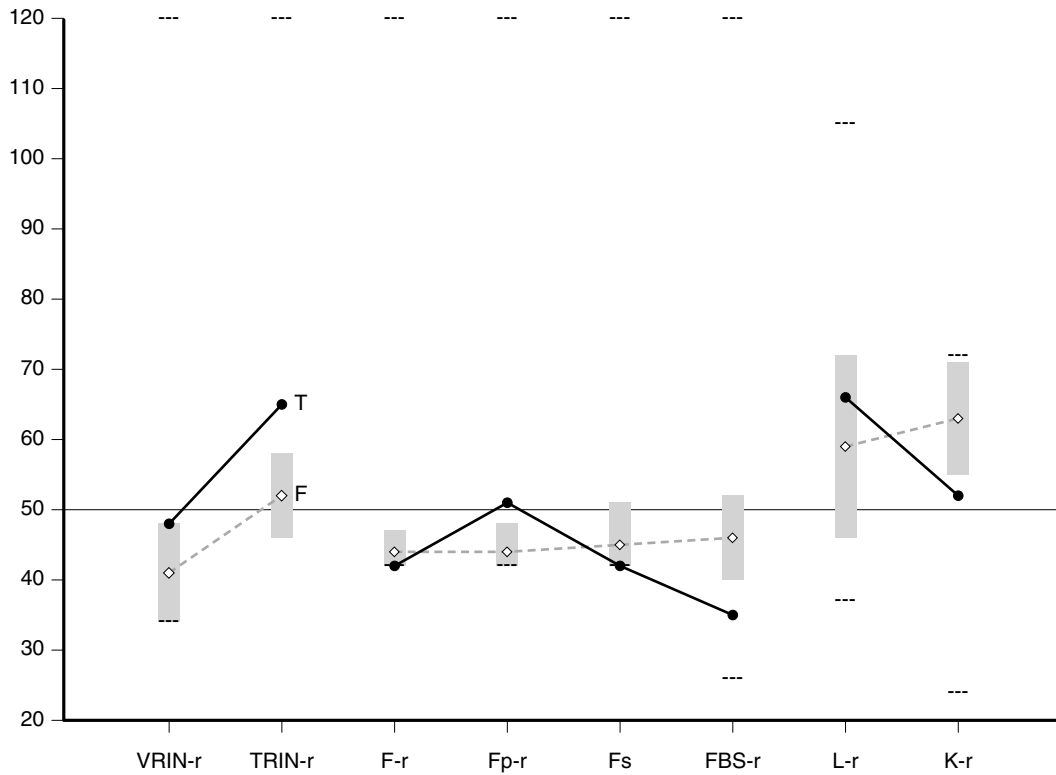
Copyright © 2008 by the Regents of the University of Minnesota. All rights reserved.
Distributed exclusively under license from the University of Minnesota by NCS Pearson, Inc. Portions reproduced from the MMPI-2-RF test booklet. Copyright © 2008 by the Regents of the University of Minnesota. All rights reserved. Portions excerpted from the *MMPI-2-RF Manual for Administration, Scoring, and Interpretation*. Copyright © 2008 by the Regents of the University of Minnesota. All rights reserved.

MMPI-2-RF and the **MMPI-2-RF logo** are registered trademarks and **Minnesota Multiphasic Personality Inventory-2-Restructured Form** is a trademark of the University of Minnesota. **Pearson**, the **PSI logo**, and **PsychCorp** are trademarks in the U.S. and/or other countries of Pearson Education, Inc., or its affiliate(s).

TRADE SECRET INFORMATION

Not for release under HIPAA or other data disclosure laws that exempt trade secrets from disclosure.

MMPI-2-RF Validity Scales



Raw Score:	3	13	0	1	0	3	6	8
T Score:	48	65 T	42	51	42	35	66	52
Response %:	98	100	100	100	100	100	100	100
Cannot Say (Raw):	2							
						Percent True (of items answered):		39%

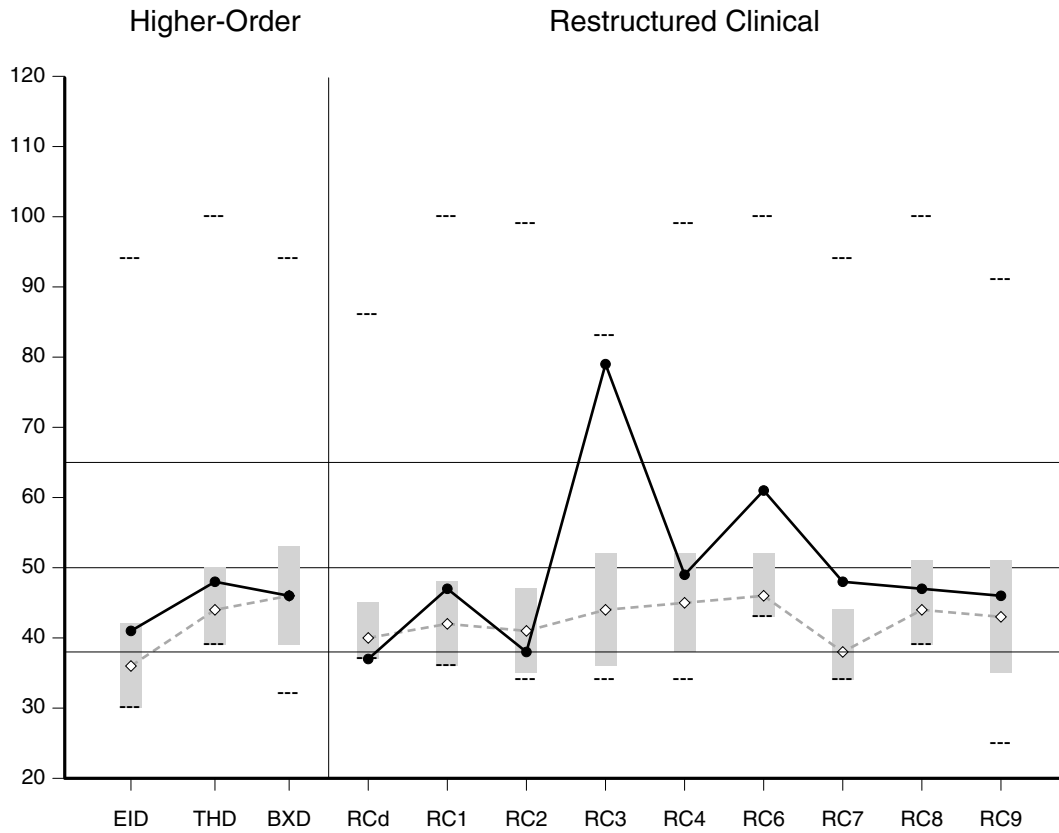
Comparison Group Data: Personnel Screening, Law Enforcement Officer (Men and Women), N = 674

Mean Score (◇--◇):	41	52 F	44	44	45	46	59	63
Standard Dev (±1 SD):	7	6	3	4	6	6	13	8

The highest and lowest T scores possible on each scale are indicated by a "---"; MMPI-2-RF T scores are non-gendered.

VRIN-r	Variable Response Inconsistency	Fs	Infrequent Somatic Responses
TRIN-r	True Response Inconsistency	FBS-r	Symptom Validity
F-r	Infrequent Responses	L-r	Uncommon Virtues
Fp-r	Infrequent Psychopathology Responses	K-r	Adjustment Validity

MMPI-2-RF Higher-Order (H-O) and Restructured Clinical (RC) Scales



Raw Score:	4	1	4	0	2	1	14	4	2	5	1	10
T Score:	41	48	46	37	47	38	79	49	61	48	47	46
Response %:	100	100	100	100	100	100	100	100	100	96	100	96

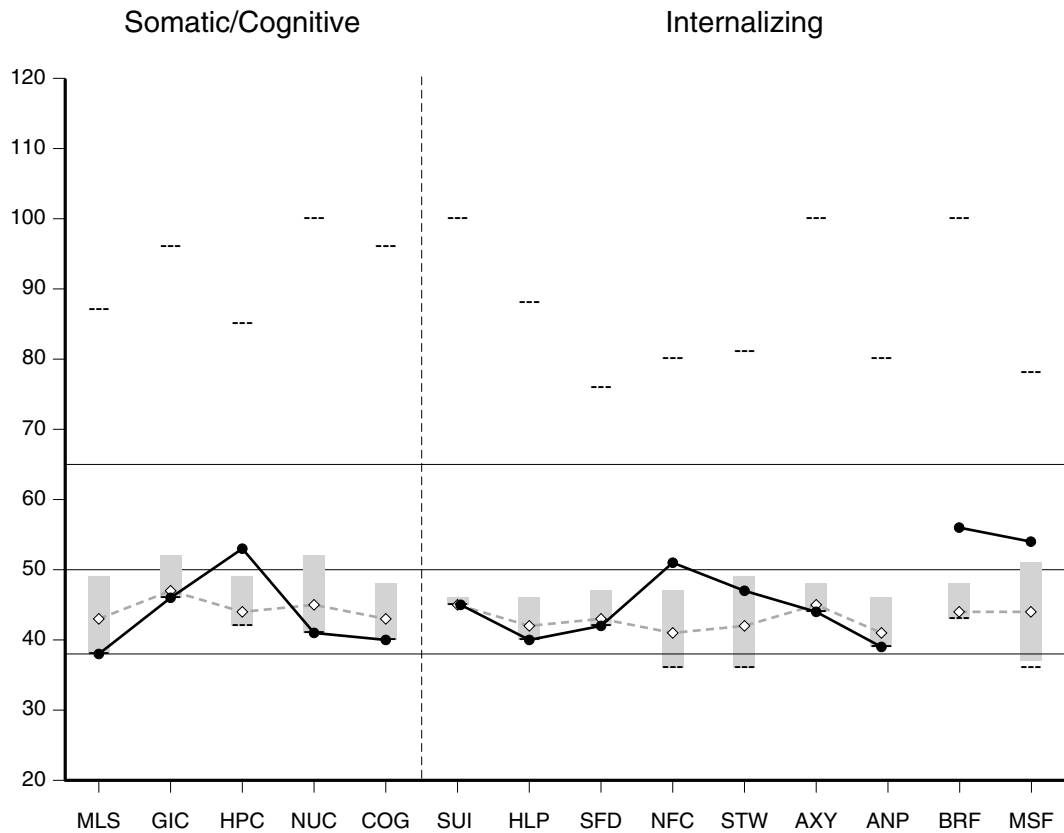
Comparison Group Data: Personnel Screening, Law Enforcement Officer (Men and Women), N = 674

Mean Score (◇---◇):	36	44	46	40	42	41	44	45	46	38	44	43
Standard Dev (±1 SD):	6	6	7	5	6	6	8	7	6	6	7	8

The highest and lowest T scores possible on each scale are indicated by a "---"; MMPI-2-RF T scores are non-gendered.

- | | | |
|--|---------------------------|-------------------------------------|
| EID Emotional/Internalizing Dysfunction | RCd Demoralization | RC6 Ideas of Persecution |
| THD Thought Dysfunction | RC1 Somatic Complaints | RC7 Dysfunctional Negative Emotions |
| BXD Behavioral/Externalizing Dysfunction | RC2 Low Positive Emotions | RC8 Aberrant Experiences |
| | RC3 Cynicism | RC9 Hypomanic Activation |
| | RC4 Antisocial Behavior | |

MMPI-2-RF Somatic/Cognitive and Internalizing Scales



Raw Score:	0	0	1	0	0	0	0	0	3	2	0	0	1	5
T Score:	38	46	53	41	40	45	40	42	51	47	44	39	56	54
Response %:	100	100	100	100	100	100	100	100	100	100	100	100	100	100

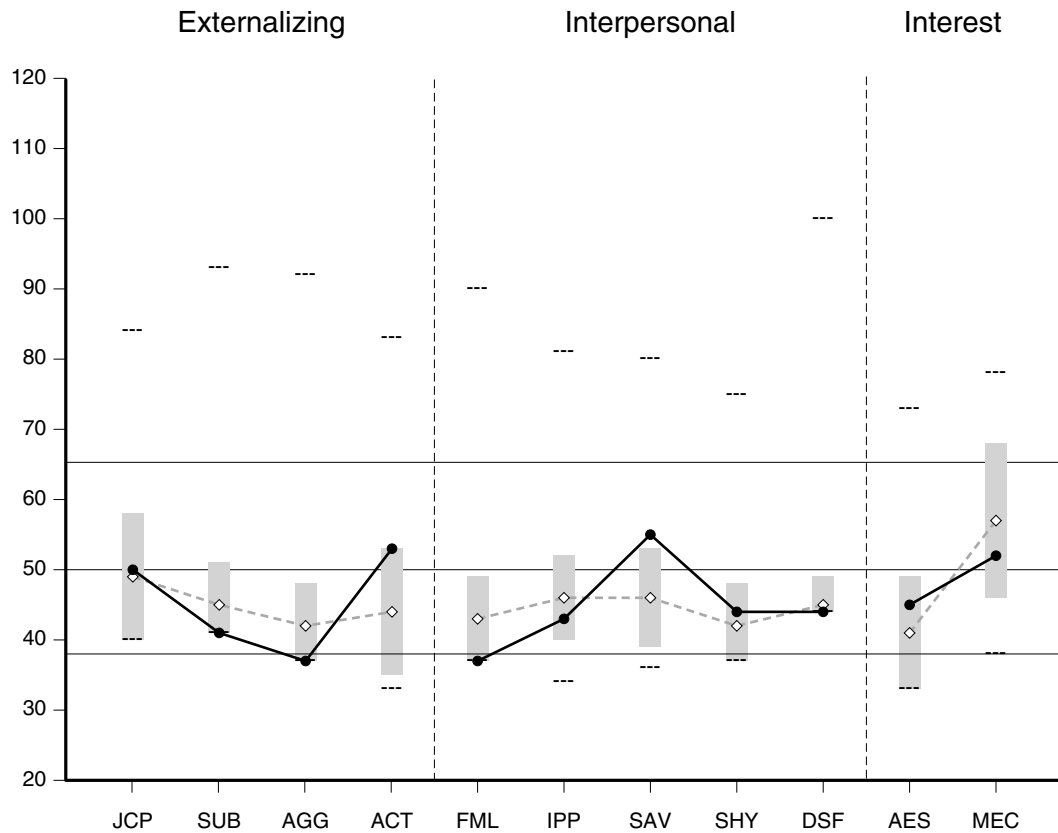
Comparison Group Data: Personnel Screening, Law Enforcement Officer (Men and Women), N = 674

Mean Score (◇--◇):	43	47	44	45	43	45	42	43	41	42	45	41	44	44
Standard Dev (±1 SD):	6	5	5	7	5	1	4	4	6	7	3	5	4	7

The highest and lowest T scores possible on each scale are indicated by a "---"; MMPI-2-RF T scores are non-gendered.

MLS	Malaise	SUI	Suicidal/Death Ideation	AXY	Anxiety
GIC	Gastrointestinal Complaints	HLP	Helplessness/Hopelessness	ANP	Anger Proneness
HPC	Head Pain Complaints	SFD	Self-Doubt	BRF	Behavior-Restricting Fears
NUC	Neurological Complaints	NFC	Inefficacy	MSF	Multiple Specific Fears
COG	Cognitive Complaints	STW	Stress/Worry		

MMPI-2-RF Externalizing, Interpersonal, and Interest Scales



Raw Score:	1	0	0	4	0	2	5	1	0	2	3
T Score:	50	41	37	53	37	43	55	44	44	45	52
Response %:	100	100	100	100	100	90	100	100	100	100	100

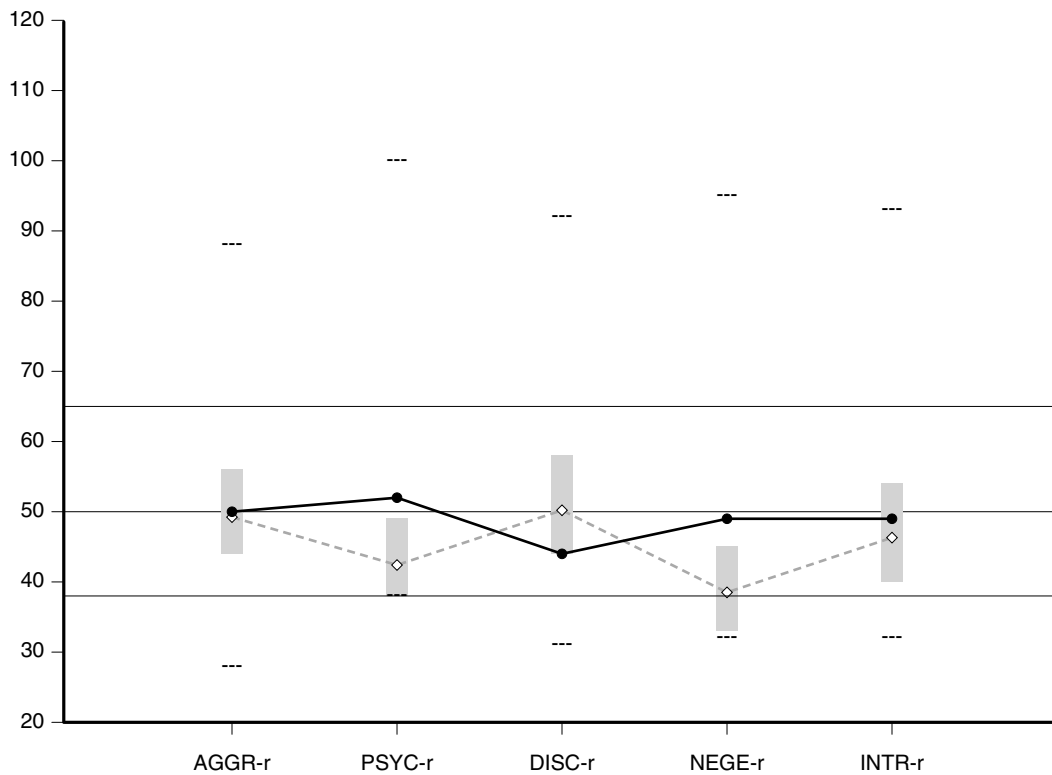
Comparison Group Data: Personnel Screening, Law Enforcement Officer (Men and Women), N = 674

Mean Score (◇--◇):	49	45	42	44	43	46	46	42	45	41	57
Standard Dev (±1 SD):	9	6	6	9	6	6	7	6	4	8	11

The highest and lowest T scores possible on each scale are indicated by a "---"; MMPI-2-RF T scores are non-gendered.

JCP	Juvenile Conduct Problems	FML	Family Problems	AES	Aesthetic-Literary Interests
SUB	Substance Abuse	IPP	Interpersonal Passivity	MEC	Mechanical-Physical Interests
AGG	Aggression	SAV	Social Avoidance		
ACT	Activation	SHY	Shyness		
		DSF	Disaffiliativeness		

MMPI-2-RF PSY-5 Scales



Raw Score:	9	2	4	6	6
T Score:	50	52	44	49	49
Response %:	94	100	100	100	100

Comparison Group Data: Personnel Screening, Law Enforcement Officer (Men and Women), N = 674

Mean Score (◇--◇):	50	43	51	39	47
Standard Dev (±1 SD):	6	6	7	6	7

The highest and lowest T scores possible on each scale are indicated by a "---"; MMPI-2-RF T scores are non-gendered.

- AGGR-r Aggressiveness-Revised
- PSYC-r Psychoticism-Revised
- DISC-r Disconstraint-Revised
- NEGE-r Negative Emotionality/Neuroticism-Revised
- INTR-r Introversion/Low Positive Emotionality-Revised

This interpretive report is intended for use by a professional qualified to interpret the MMPI-2-RF. The information it contains should be considered in the context of the test taker's background, the circumstances of the assessment, and other available information.

SYNOPSIS

Scores on the MMPI-2-RF validity scales raise concerns about the possible impact of under-reporting on the validity of this protocol. With that caution noted, scores on the substantive scales indicate interpersonal dysfunction. Interpersonal difficulties relate to cynicism.

PROTOCOL VALIDITY

Content Non-Responsiveness

There are no problems with unscorable items in this protocol. The test taker responded relevantly to the items on the basis of their content.

Over-Reporting

There are no indications of over-reporting in this protocol.

Under-Reporting

The test taker presented himself in a positive light by denying some minor faults and shortcomings that most people acknowledge. This level of virtuous self-presentation may reflect a background stressing traditional values. Any absence of elevation on the substantive scales should be interpreted with caution. Elevated scores on the substantive scales may underestimate the problems assessed by those scales.

SUBSTANTIVE SCALE INTERPRETATION

Clinical symptoms, personality characteristics, and behavioral tendencies of the test taker are described in this section and organized according to an empirically guided framework. Statements containing the word "reports" are based on the item content of MMPI-2-RF scales, whereas statements that include the word "likely" are based on empirical correlates of scale scores. Specific sources for each statement can be viewed with the annotation features of this report.

The following interpretation needs to be considered in light of cautions noted about the possible impact of under-reporting on the validity of this protocol.

Somatic/Cognitive, Emotional, Thought, and Behavioral Dysfunction

There are no indications of somatic, cognitive, emotional, thought, or behavioral dysfunction in this protocol. However, because of indications of under-reporting described earlier, such problems cannot be ruled out.

Interpersonal Functioning Scales

The test taker reports having many cynical beliefs and a hostile view and distrust of others (for example, believing others always look out only for their own interests). He is very likely to feel alienated from others and to have markedly negative interpersonal experiences because of his considerable cynicism.

Interest Scales

The test taker reports an average number of interests in activities or occupations of an aesthetic or literary nature (e.g., writing, music, the theater). He also reports an average number of interests in activities or occupations of a mechanical or physical nature (e.g., fixing and building things, the outdoors, sports).

DIAGNOSTIC CONSIDERATIONS

This section provides recommendations for psychodiagnostic assessment based on the test taker's MMPI-2-RF results. It is recommended that he be evaluated for the following:

Interpersonal Disorders

- Personality disorders involving mistrust of and hostility toward others

TREATMENT CONSIDERATIONS

This section provides inferential treatment-related recommendations based on the test taker's MMPI-2-RF scores.

Psychotherapy Process Issues

- Cynicism may interfere with forming a therapeutic relationship.

Possible Targets for Treatment

- Lack of interpersonal trust

ITEM-LEVEL INFORMATION

Unscorable Responses

Following is a list of items to which the test taker did not provide scorable responses. Unanswered or double answered (both True and False) items are unscorable. The scales on which the items appear are in parentheses following the item content.

- 235. Item Content Omitted (RC7)
- 327. Item Content Omitted (VRIN-r, RC9, IPP, AGGR-r)



Special Note:

The content of the test items is included in the actual reports. To protect the integrity of the test, the item content does not appear in this sample report.

Critical Responses

Seven MMPI-2-RF scales--Suicidal/Death Ideation (SUI), Helplessness/Hopelessness (HLP), Anxiety (AXY), Ideas of Persecution (RC6), Aberrant Experiences (RC8), Substance Abuse (SUB), and Aggression (AGG)--have been designated by the test authors as having critical item content that may require immediate attention and follow-up. Items answered by the individual in the keyed direction (True or False) on a critical scale are listed below if his T score on that scale is 65 or higher.

The test taker has not produced an elevated T score (≥ 65) on any of these scales.

End of Report

This and previous pages of this report contain trade secrets and are not to be released in response to requests under HIPAA (or any other data disclosure law that exempts trade secret information from release). Further, release in response to litigation discovery demands should be made only in accordance with your profession's ethical guidelines and under an appropriate protective order.
