



Minnesota Multiphasic
Personality Inventory-2
Restructured Form™

Score Report

MMPI-2-RF®

Minnesota Multiphasic Personality Inventory-2-Restructured Form™

Yossef S. Ben-Porath, PhD, & Auke Tellegen, PhD

ID Number: 000000004
Age: 18
Gender: Male
Marital Status: Married
Years of Education: Not reported
Date Assessed: 04/01/2007

PEARSON

PsychCorp

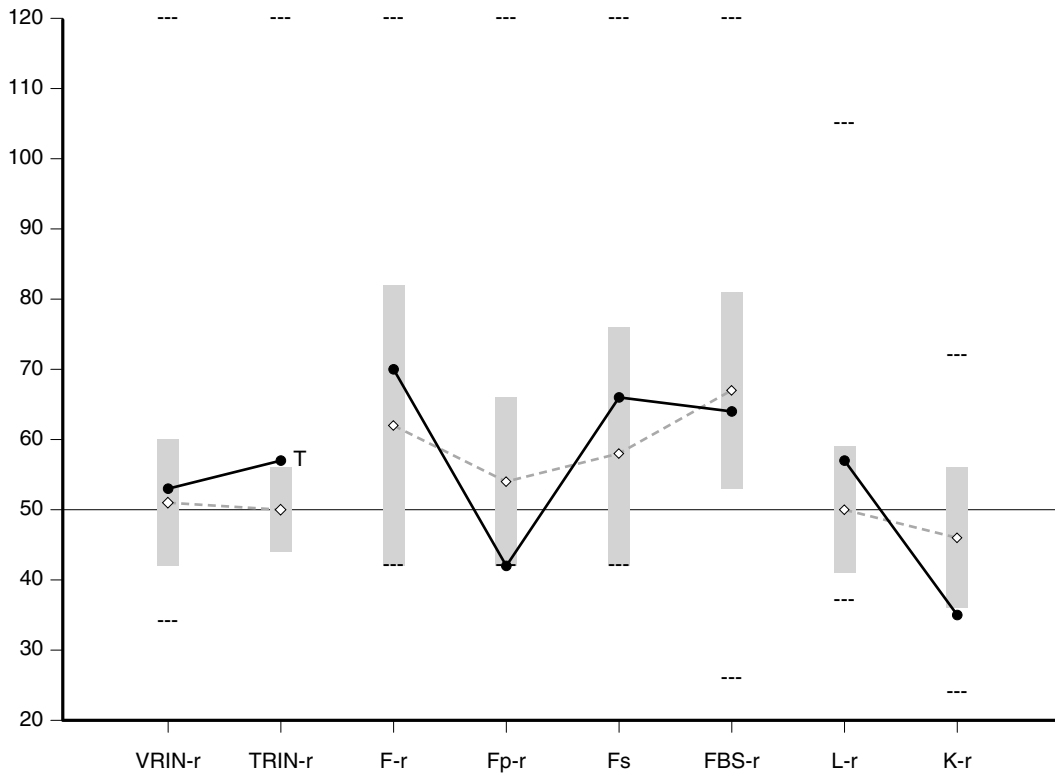
Copyright © 2008 by the Regents of the University of Minnesota. All rights reserved.
Distributed exclusively under license from the University of Minnesota by NCS Pearson, Inc. Portions reproduced from the MMPI-2-RF test booklet. Copyright © 2008 by the Regents of the University of Minnesota. All rights reserved. Portions excerpted from the *MMPI-2-RF Manual for Administration, Scoring, and Interpretation*. Copyright © 2008 by the Regents of the University of Minnesota. All rights reserved.

MMPI-2-RF and the **MMPI-2-RF logo** are registered trademarks and **Minnesota Multiphasic Personality Inventory-2-Restructured Form** is a trademark of the University of Minnesota. **Pearson**, the **PSI logo**, and **PsychCorp** are trademarks in the U.S. and/or other countries of Pearson Education, Inc., or its affiliate(s).

TRADE SECRET INFORMATION

Not for release under HIPAA or other data disclosure laws that exempt trade secrets from disclosure.

MMPI-2-RF Validity Scales



Raw Score:	4	12	6	0	3	12	4	3
T Score:	53	57	70	42	66	64	57	35
Response %:	100	100	100	95	100	100	100	100
Cannot Say (Raw):	1							Percent True (of items answered): 37%

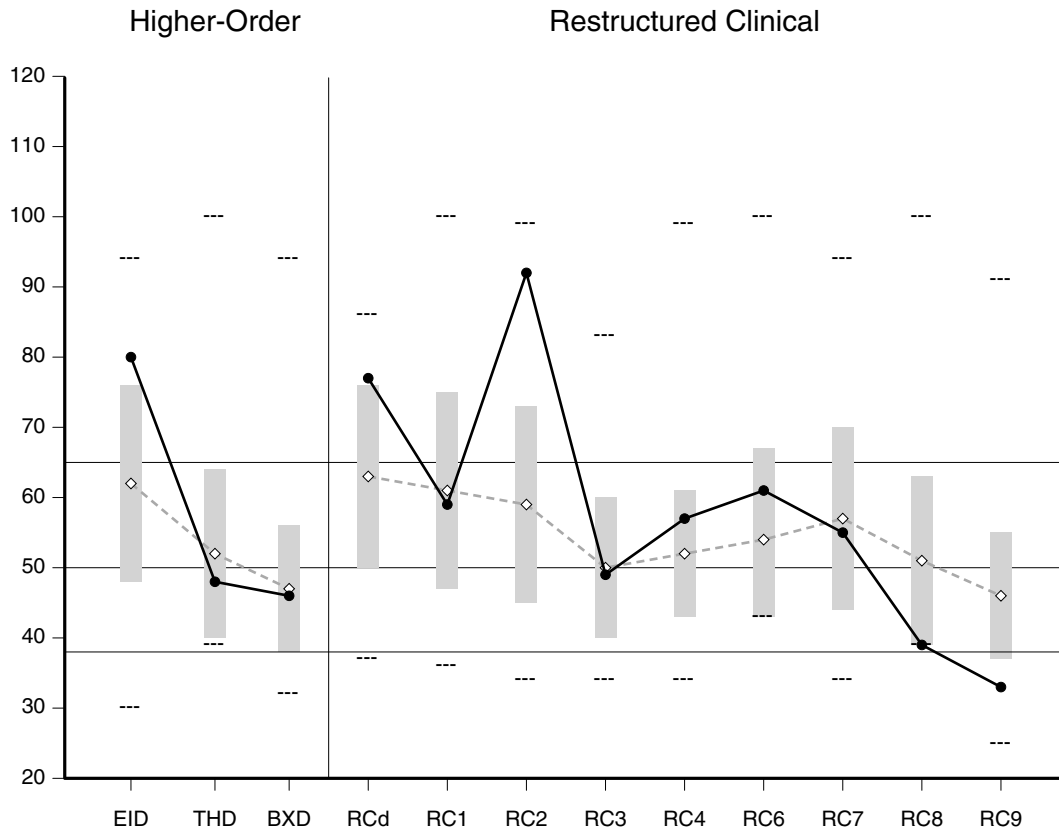
Comparison Group Data: Outpatient, Independent Practice (Women), N = 432

Mean Score (◇--◇):	51	50	62	54	58	67	50	46
Standard Dev (±1 SD):	9	6	20	12	18	14	9	10

The highest and lowest T scores possible on each scale are indicated by a "---"; MMPI-2-RF T scores are non-gendered.

VRIN-r	Variable Response Inconsistency	Fs	Infrequent Somatic Responses
TRIN-r	True Response Inconsistency	FBS-r	Symptom Validity
F-r	Infrequent Responses	L-r	Uncommon Virtues
Fp-r	Infrequent Psychopathology Responses	K-r	Adjustment Validity

MMPI-2-RF Higher-Order (H-O) and Restructured Clinical (RC) Scales



Raw Score:	32	1	4	19	6	15	6	7	2	9	0	3
T Score:	80	48	46	77	59	92	49	57	61	55	39	33
Response %:	100	100	100	100	100	100	100	100	100	100	100	100

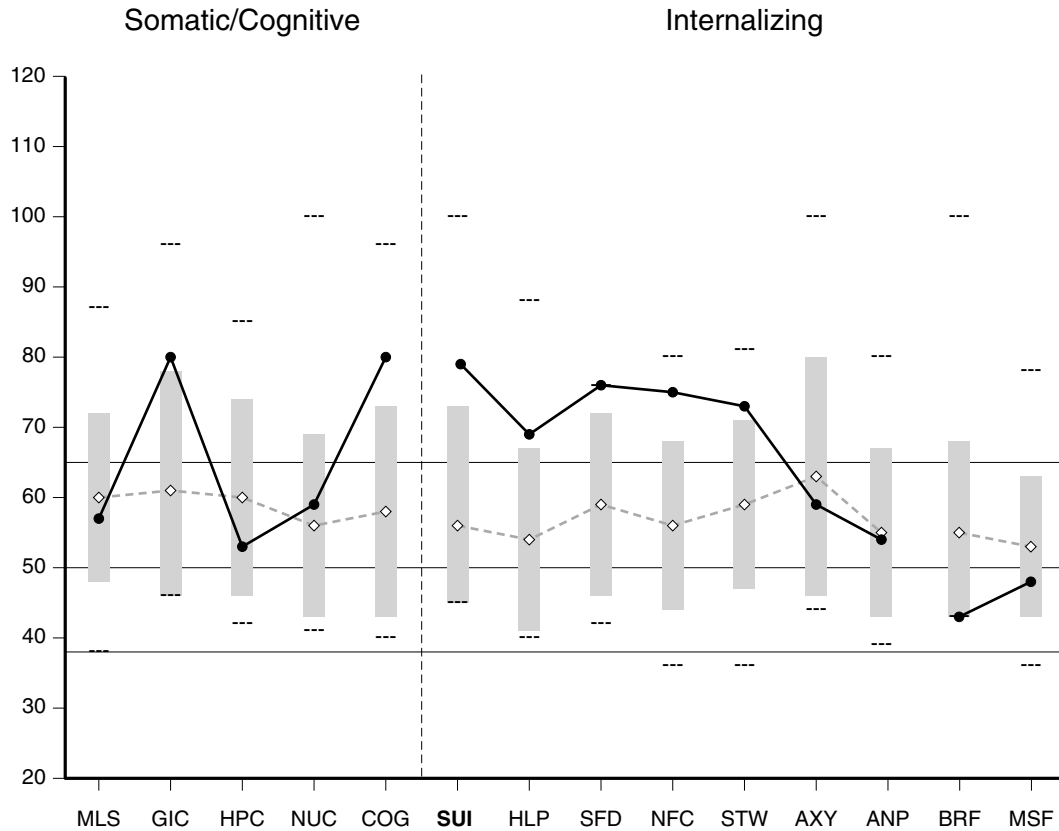
Comparison Group Data: Outpatient, Independent Practice (Women), N = 432

Mean Score (◇---◇):	62	52	47	63	61	59	50	52	54	57	51	46
Standard Dev (±1 SD):	14	12	9	13	14	14	10	9	13	13	12	9

The highest and lowest T scores possible on each scale are indicated by a "---"; MMPI-2-RF T scores are non-gendered.

- | | | |
|--|---------------------------|-------------------------------------|
| EID Emotional/Internalizing Dysfunction | RCd Demoralization | RC6 Ideas of Persecution |
| THD Thought Dysfunction | RC1 Somatic Complaints | RC7 Dysfunctional Negative Emotions |
| BXD Behavioral/Externalizing Dysfunction | RC2 Low Positive Emotions | RC8 Aberrant Experiences |
| | RC3 Cynicism | RC9 Hypomanic Activation |
| | RC4 Antisocial Behavior | |

MMPI-2-RF Somatic/Cognitive and Internalizing Scales



Raw Score:	3	3	1	2	7	2	3	4	8	6	1	3	0	3
T Score:	57	80	53	59	80	79	69	76	75	73	59	54	43	48
Response %:	100	100	100	100	100	100	100	100	100	100	100	100	100	100

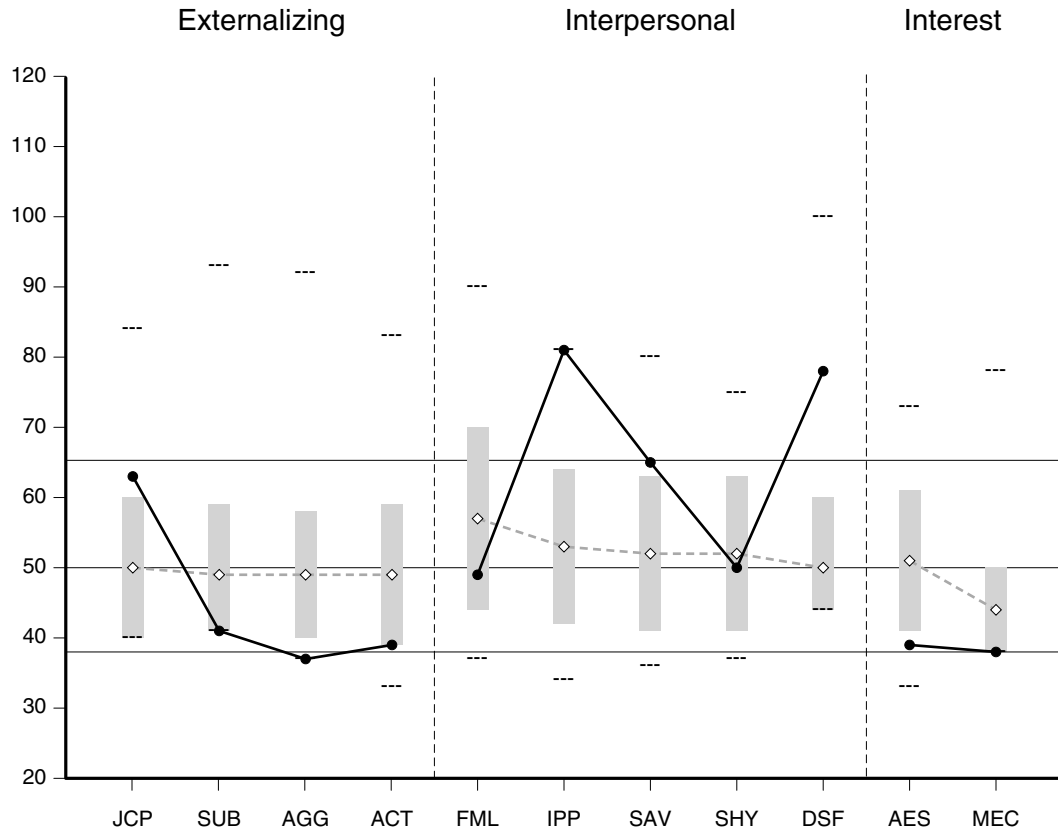
Comparison Group Data: Outpatient, Independent Practice (Women), N = 432

Mean Score (◇--◇):	60	61	60	56	58	56	54	59	56	59	63	55	55	53
Standard Dev (±1 SD):	12	17	14	13	15	17	13	13	12	12	17	12	13	10

The highest and lowest T scores possible on each scale are indicated by a "---"; MMPI-2-RF T scores are non-gendered.

MLS	Malaise	SUI	Suicidal/Death Ideation	AXY	Anxiety
GIC	Gastrointestinal Complaints	HLP	Helplessness/Hopelessness	ANP	Anger Proneness
HPC	Head Pain Complaints	SFD	Self-Doubt	BRF	Behavior-Restricting Fears
NUC	Neurological Complaints	NFC	Inefficacy	MSF	Multiple Specific Fears
COG	Cognitive Complaints	STW	Stress/Worry		

MMPI-2-RF Externalizing, Interpersonal, and Interest Scales



Raw Score:	3	0	0	1	2	10	7	3	3	1	0
T Score:	63	41	37	39	49	81	65	50	78	39	38
Response %:	100	100	100	100	100	100	100	100	100	100	100

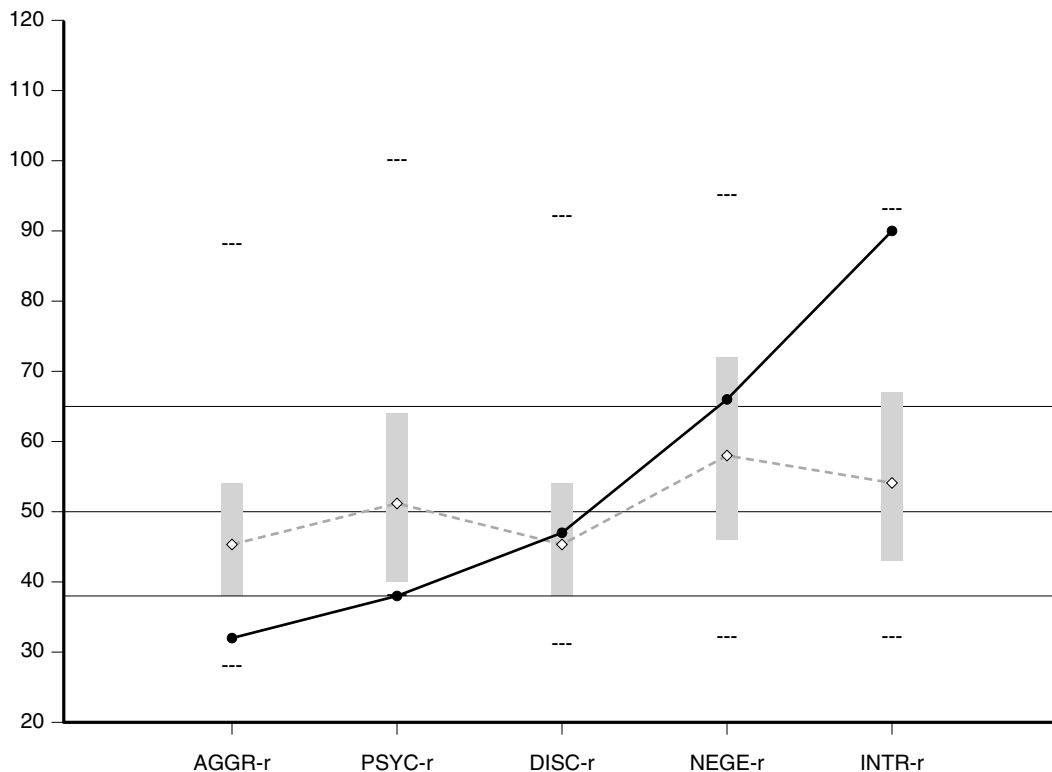
Comparison Group Data: Outpatient, Independent Practice (Women), N = 432

Mean Score (◇--◇):	50	49	49	49	57	53	52	52	50	51	44
Standard Dev (±1 SD):	10	10	9	10	13	11	11	11	10	10	6

The highest and lowest T scores possible on each scale are indicated by a "---"; MMPI-2-RF T scores are non-gendered.

JCP	Juvenile Conduct Problems	FML	Family Problems	AES	Aesthetic-Literary Interests
SUB	Substance Abuse	IPP	Interpersonal Passivity	MEC	Mechanical-Physical Interests
AGG	Aggression	SAV	Social Avoidance		
ACT	Activation	SHY	Shyness		
		DSF	Disaffiliativeness		

MMPI-2-RF PSY-5 Scales



Raw Score:	1	0	5	12	19
T Score:	32	38	47	66	90
Response %:	100	100	100	100	100

Comparison Group Data: Outpatient, Independent Practice (Women), N = 432

Mean Score (◇--◇):	46	52	46	59	55
Standard Dev (±1 SD):	8	12	8	13	12

The highest and lowest T scores possible on each scale are indicated by a "---"; MMPI-2-RF T scores are non-gendered.

- AGGR-r Aggressiveness-Revised
- PSYC-r Psychoticism-Revised
- DISC-r Disconstraint-Revised
- NEGE-r Negative Emotionality/Neuroticism-Revised
- INTR-r Introversion/Low Positive Emotionality-Revised

ITEM-LEVEL INFORMATION

Unscorable Responses

Following is a list of items to which the test taker did not provide scorable responses. Unanswered or double answered (both True and False) items are unscorable. The scales on which the items appear are in parentheses following the item content.

283. Item Content Omitted (Fp-r)

Critical Responses

Seven MMPI-2-RF scales--Suicidal/Death Ideation (SUI), Helplessness/Hopelessness (HLP), Anxiety (AXY), Ideas of Persecution (RC6), Aberrant Experiences (RC8), Substance Abuse (SUB), and Aggression (AGG)--have been designated by the test authors as having critical item content that may require immediate attention and follow-up. Items answered by the individual in the keyed direction (True or False) on a critical scale are listed below if his T score on that scale is 65 or higher. The percentage of the MMPI-2-RF normative sample (NS) and of the Outpatient, Independent Practice (Women) comparison group (CG) that answered each item in the keyed direction are provided in parentheses following the item content.

Suicidal/Death Ideation (SUI, T Score = 79)

120. Item Content Omitted (True; NS 2.4%, CG 9.3%)

334. Item Content Omitted (True; NS 13.5%, CG 16.2%)

Helplessness/Hopelessness (HLP, T Score = 69)

169. Item Content Omitted (True; NS 4.3%, CG 19.2%)

214. Item Content Omitted (True; NS 10.4%, CG 15.3%)

336. Item Content Omitted (True; NS 38.0%, CG 29.9%)



Special Note:

The content of the test items is included in the actual reports. To protect the integrity of the test, the item content does not appear in this sample report.

End of Report

This and previous pages of this report contain trade secrets and are not to be released in response to requests under HIPAA (or any other data disclosure law that exempts trade secret information from release). Further, release in response to litigation discovery demands should be made only in accordance with your profession's ethical guidelines and under an appropriate protective order.
