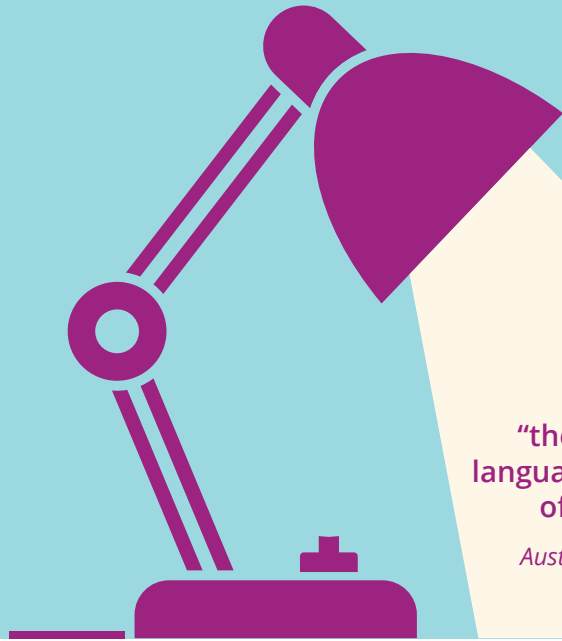




# Unlocking Potential *with English*



*"the limits of my language are the limits of my world."*

*Austrian-British philosopher  
Ludwig Wittgenstein*

The English language has never been better-placed to connect people with endlessly diverse opportunities—and their very best life chances.

Great English language skills can work wonders, dissolving barriers that would otherwise limit people's aspirations—whether to land a job, enrich their communities, or follow their dreams as an artist. However, in the US, the number of English language learners has doubled in the last 15 years and is expected to account for 1 in 4 students by 2025.

## Ready to meet the challenge?

While the challenge to educators is great, we're better informed than ever about today's learning needs. **Test of English Language Learning™ (TELL™)** is an interactive assessment tool that English learners in grades K through 12 intuitively understand and enjoy. Using updated voice recognition and handwriting evaluation technologies, it screens, diagnoses and provides feedback on each student's progress throughout the school year.



Pearson

# A wide-open world of uses

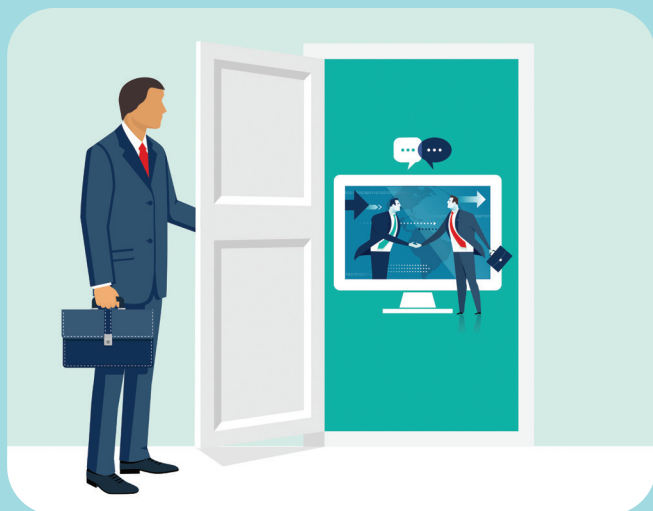
Its colorful and well-traveled past means that English today connects people, places, and professions all over the planet, making it a communication tool with truly global reach.

- Right now, there are at least 7,102 living languages in the world. English is the most widely used, spoken by around 1.75 billion people—that's one in every four of us.
- English plays a role in the cultural, political, and economic lives of more than 40 countries, from India to Belize, and from Australia to Zambia.
- English is the international language of science, math, aviation, diplomacy, and tourism.

**DID YOU KNOW THERE ARE  
7,102 LIVING LANGUAGES IN THE WORLD?**



## Expanding horizons. Opening doors.



Great English language skills can work wonders, dissolving barriers that would otherwise limit people's aspirations—whether to land a job, enrich their communities, or follow their dreams as an artist.

- Non-native English speakers who made exceptional contributions to the world's cultures through mastering the language include novelist Joseph Conrad; actor Ingrid Bergman; singer Björk; film director Ang Lee; actor, martial artist and philanthropist Jackie Chan; and newspaper publisher Joseph Pulitzer.
- The medium for 80% of all information stored on computers, English is also the primary language of the internet, where it is used by an estimated 565 million people.

# High stakes for studies

In school, limited language skills don't just bring down English scores. They compromise the entirety of students' education journeys, with consequences that can last a lifetime.

- In the US, 4.4 million students are English language learners. That's more than 9% of the entire student population.
- Students with good English proficiency are more than twice as likely as those without.



# Today's challenge to teachers

For millions of English language learners, the stakes have never been higher. While the challenge to educators is great, we're better informed than ever about today's learning needs.

- In the US, the number of English language learners has doubled in the last 15 years and is expected to account for one in every four students by 2025.
- In 2009, only 30% of US high school students learning English graduated, compared to the national average of 75.5%.
- In 2012, the public school populations of US cities included an average of 14.2% of students learning English.



# How can we unlock English learners' potential?

TELL is a fast, versatile, interactive, and fun to use tablet-based English proficiency reading, writing, listening, and speaking assessment. It monitors individuals and groups and while helping teachers personalize their instruction toward academic progress as never before.

TELL is an interactive assessment tool that English learners in grades K through 12 intuitively understand and enjoy. Using updated voice recognition and handwriting evaluation technologies, it screens, diagnoses and provides feedback on each student's progress throughout the school year.

Rod Federwisch, Principal of Butterfield Ranch Elementary School in Chino Hills, California, claims "Having groups of students take the test at the same time gave the administrators literally hundreds of hours back from the time previously invested in testing."

TELL gives teachers learners' test results in minutes, helping them map instruction to individual needs right away. "It gives assessment feedback in areas of language development that we find difficult to assess unless in a one-to-one setting," said District Curriculum Director for Old Adobe Union School District in Sonoma County, California, whose 1,750-student elementary community assessed the system.



Unlock the unlimited potential of your students' worlds with TELL!  
Learn more at [PearsonAssessments.com/TELL](https://PearsonAssessments.com/TELL)