

## Evidence of **Validity**



### Sensitivity & Specificity

Total Metalinguistics Index, Meta-Pragmatics Index, or Meta-Semantics Index	Standard Score Cut	Sensitivity	Specificity
-1 SD	85	.96	.78
-1.5 SD	77	.74	.93
-2 SD	70	.31	.96

## Evidence of **Reliability**



Internal Consistency	Index Scores	.82–.96
Test Retest Stability	Total Metalinguistics Index	.86
	Meta-Pragmatics Index	.69
	Meta-Semantics Index	.88
Inter Scorer Agreement	Making Inferences	.95
	Conversation Skills	.90
	Multiple Meanings	.95
	Figurative Language	.95

## Clinical Groups

Language Disorder	Differences significant at <b>&lt;.01</b>
English as a Second Language	
Autism Spectrum Disorder	

## Test **Correlations to:**



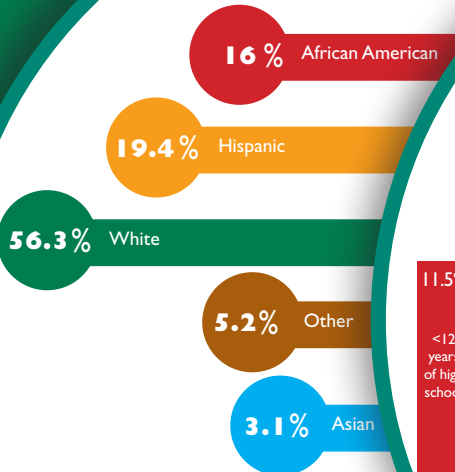
Total Metalinguistics Index and TLC-E Composite Score: .81

## Demographic Information

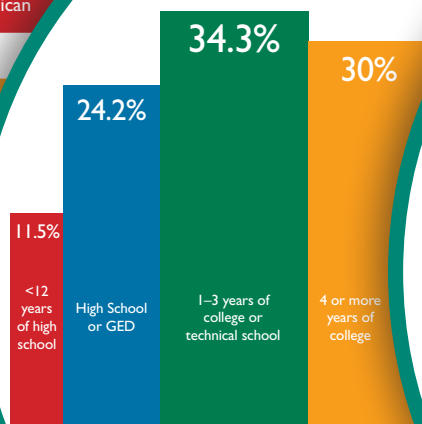
800 students ages 9–21 in the normative sample



### Race Ethnicity



### Parent Education



### Sample by Region

